

# USER MANUAL

European Models MD 35/60/100/120—3/4/5 CU/SQ

American Models MD 24/40/48—3/4/5 CU



MD Premium SQ



MD CU



## WARNING

Read the instructions before using the machine.

**KEEP THIS USER MANUAL FOR FUTURE USE**

© 2022 Fri-Jado B.V., Oud Gastel, The Netherlands.

We advise you to contact your supplier for the guarantee period and conditions. Further we refer to our General Terms and Conditions for Sales and Delivery that are available upon request.

The manufacturer does not accept any liability for damage or injury caused by failing to adhere to these regulations or by not observing the usual caution or care in actions, operation, maintenance or repair activities, even if not explicitly described in this manual.

As a result of constant commitment to improvement, it may happen that your unit deviates in detail from what is described in this manual. For this reason, the given instructions are only a guideline for the installation, use, maintenance and repair of the unit referred to in this manual. This manual has been composed with the utmost care. The manufacturer shall, however, not be held responsible for any mistakes in this manual nor for any consequences thereof. The user is allowed to copy this manual for own use. Further all rights are reserved and nothing in this manual may be reproduced and/or made public in any way.

**Modifications**

In case of unauthorized modifications in or on the unit, every liability on the part of the manufacturer becomes null and void.

# CONTENTS

<b>1.</b>	<b>INTRODUCTION .....</b>	<b>4</b>
1.1	General.....	4
1.2	Identification of the unit .....	4
1.3	Pictograms and symbols .....	4
1.4	Safety instructions .....	5
1.4.1	General.....	5
1.4.2	Moving (when applicable) .....	6
1.5	Hygiene .....	6
1.6	Service and technical support .....	6
1.7	Storage.....	6
1.8	Disposal.....	6
<b>2.</b>	<b>DESCRIPTION OF THE UNIT .....</b>	<b>7</b>
2.1	Technical description .....	7
2.2	Intended use .....	7
2.3	Accessories .....	7
<b>3.</b>	<b>INSTALLATION AND FIRST USE .....</b>	<b>8</b>
<b>4.</b>	<b>OPERATION AND USE .....</b>	<b>10</b>
4.1	Switch on .....	10
4.2	Checking the temperature in the unit .....	11
4.3	Checking the product temperature .....	11
4.4	Switch off .....	11
<b>5.</b>	<b>DAILY MAINTENANCE.....</b>	<b>12</b>
<b>6.</b>	<b>MALFUNCTIONS AND SERVICE .....</b>	<b>13</b>
6.1	Temperature fault .....	13
6.2	Replacing a lamp .....	14
6.3	Placing a price strip .....	15
6.4	Replacing the child guard .....	15
6.5	Replacing the mains cord .....	15
<b>7.</b>	<b>TECHNICAL SPECIFICATIONS .....</b>	<b>16</b>

## 1. INTRODUCTION

### 1.1 General

This manual is intended for the user of the MD (Multi Deck). The features and controls are being described, along with directions for the safest and most efficient use, in order to guarantee a long life of the unit.

All pictograms, symbols and drawings in this manual apply to all MD models.

### 1.2 Identification of the unit

The identification plate can be found on the outside of the machine, and contains the following data:

- Name of the supplier or the manufacturer
- Model
- Serial number
- Year of construction
- Voltage
- Frequency
- Power consumption

### 1.3 Pictograms and symbols

In this manual, the following pictograms and symbols are used:



**WARNING**

Possible physical injury or serious damage to the unit, if the instructions are not carefully followed.



**WARNING**

Hazardous electrical voltage.



**WARNING**

Danger of getting injured by hot surfaces.



Suggestions and recommendations to simplify indicated actions.



Recycling symbol.



Direction of view symbol.

## 1.4 Safety instructions


**WARNING**

See installation instructions for grounding requirements.


**WARNING**

The top and bottom of the trays and columns at the back of the unit can be very hot.


**WARNING**

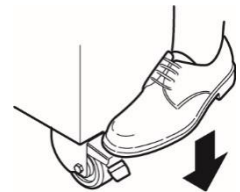
The maximum load on top of the unit may never exceed 50 kg (110 lbs.).  
The maximum load per shelf may never exceed 35 kg (77 lbs.).  
The maximum load of a drawer may never exceed 25 kg (55 lbs.).


**WARNING**

Never use aggressive or abrasive cleaning agents.


**WARNING**

Always use the brakes on both front wheels:



### 1.4.1 General

The user of the unit will be fully responsible for abiding the locally prevailing safety- rules and regulations.

The pictograms, labels, instructions and warning signs attached to the unit, are part of the safety measures. They may never be covered or removed, and have to be clearly visible during the entire lifetime of the unit.

Immediately repair or replace damaged or illegible pictograms, warnings and instructions.

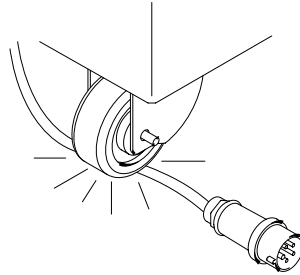
- Only pack the products in bags or containers that are suitable for this purpose.<sup>1</sup>
- To ensure good contact with the heated trays, only place a single layer of products.
- Make sure that the air slot at the front of the shelf remain free from obstructions.
- The unit must be cleaned regularly to ensure proper functioning.
- To avoid short-circuiting, never clean the unit using a water hose. For cleaning instructions, see section 5.
- This appliance can be used by children aged from 8 years and above and persons with reduced physical, sensory or mental capabilities or lack of experience and knowledge if they have been given supervision or instruction concerning use of the appliance in a safe way and understand the hazards involved.
- Children shall not play with the appliance.
- Cleaning and user maintenance shall not be made by children without supervision.

<sup>1</sup> The packaged material must be heat resistant to at least 95 °C (203 °F).

### 1.4.2 Moving (when applicable)

When moving the unit:

- Before moving the unit, first switch off the mains voltage by pulling the plug from the wall socket.
- To avoid damage, remove the lower skirts when necessary.
- The units are not suited to pass ledges or obstacles higher than 10 mm (0.4 inch).
- Make sure that the wheels can move freely, so they never touch the power lead.



### 1.5 Hygiene

The quality of a fresh product always depends on hygiene.

It is essential that products are packaged immediately after preparation. At that moment, the core temperature of the products should at least be 85°C (185°F).



Immediately remove products in damaged packaging from the equipment. Clean all components that have come in contact with products from damaged packaging. Refer to section 5.

### 1.6 Service and technical support

The electrical schematics of your unit is included. In case of malfunctions you can contact your dealer/service agent. Make sure you have the following data available:

- Model.
- Serial number.

This data can be found on the identification plate.

### 1.7 Storage

If the unit will not be used temporarily, and will be stored, follow these instructions:

- Clean the unit thoroughly.
- Wrap the unit from getting dusty.
- Store the unit in a dry, non-condensing environment.

### 1.8 Disposal



Dispose of the machine, any components or lubricants removed from it safely in accordance with all local and national safety and environment requirements.

## 2. DESCRIPTION OF THE UNIT

### 2.1 Technical description

The unit uses convection heat. Materials on the unit is made of stainless or coated steel and shatter-resistant clear side glass.

### 2.2 Intended use

The unit has been designed to maintain products at a minimum temperature at 65°C (150°F) for up to four hours. Any other use will not be regarded as intended use.

The manufacturer accepts no liability whatsoever for loss or injury caused by failing to strictly adhere to the safety guidelines and instructions in this manual or due to carelessness during installation, use, maintenance and repair of the unit referred to in this manual and any of its accessories.

Use the unit in perfect technical condition only.

### 2.3 Accessories

Your unit contains the following standard accessories:

- User manual.

For optional accessories see [www.frijado.com](http://www.frijado.com).

### 3. INSTALLATION AND FIRST USE



**WARNING**

Electric shock hazard. Grounding instructions: only connect the appliance to an alternating current provided by a grounded wall socket, with a mains voltage in accordance with the information indicated on the data plate of the appliance.

It is the consumer's responsibility to make sure the electrical installation conforms with current national and local codes and wiring regulations.

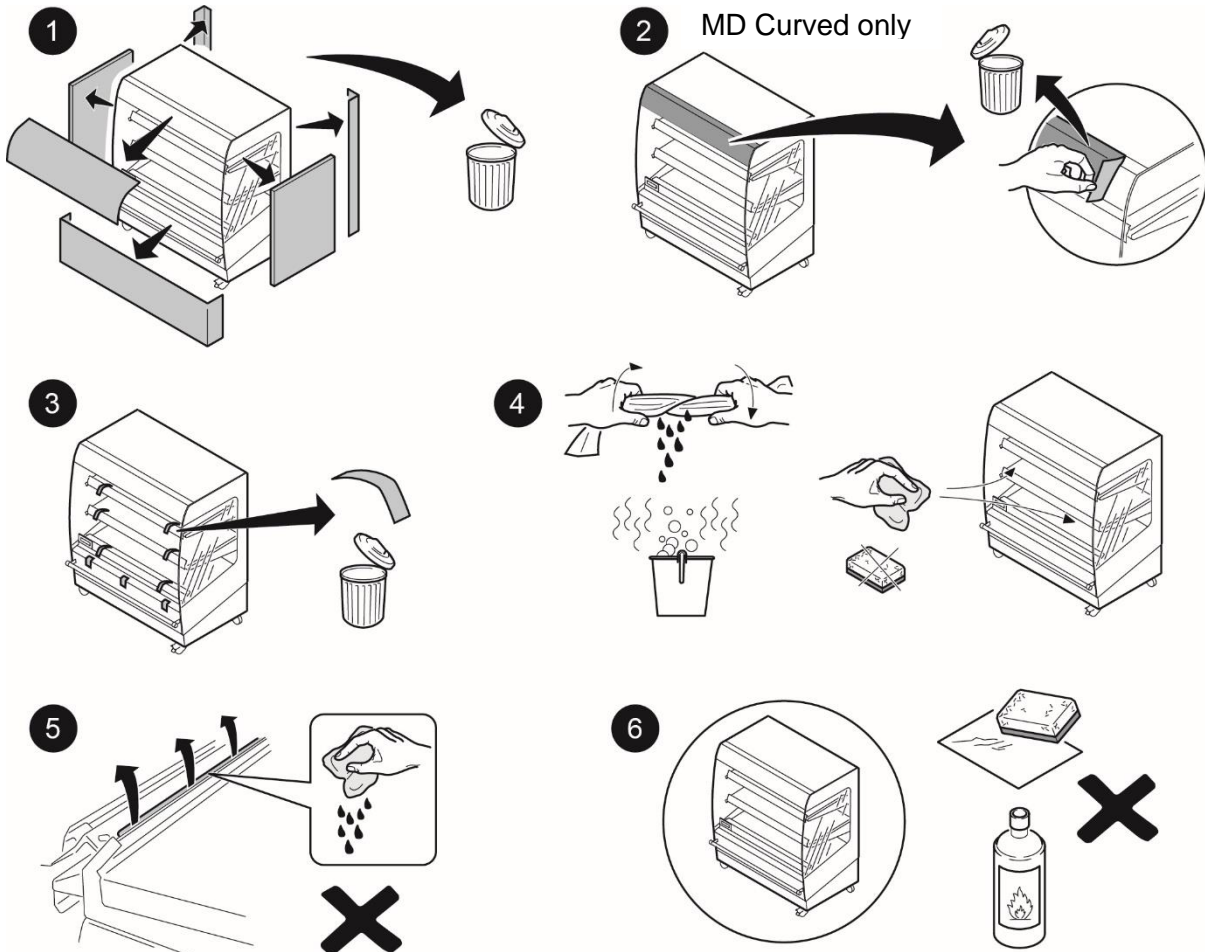
Do not use a multi plug or extension cord. Such can result in fire, electrical shock, or other personal injury.

Failure to follow these instructions can result in death or serious injury.

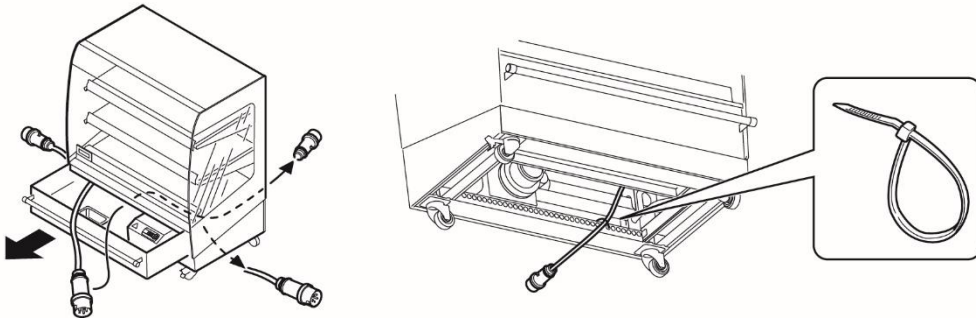


All packing materials used for this unit are suited for recycling.

After unpacking, check the state of the unit. In case of damage, store the packing material, and contact the transporter within fifteen working days after receiving the goods.



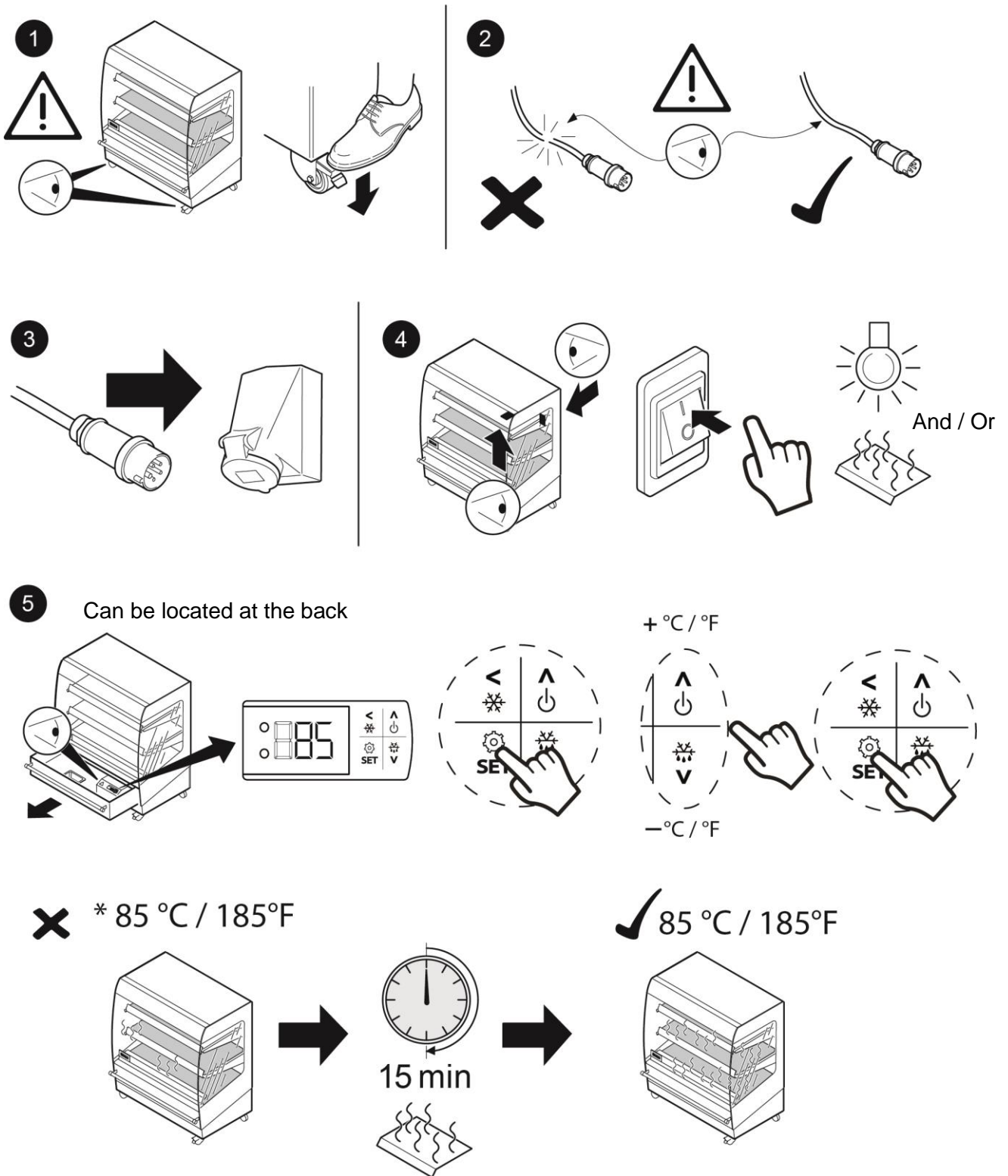




1. Remove all packaging materials from the unit.
2. Remove the foil from the illuminated sign, shelves and child guard.
3. Remove all temporary tape.
4. Before starting to use the unit, clean the inside with a damp cloth.
5. Avoid excessive use of water on the shelves. Make sure no water goes into the air slots.
6. Clean the side glass both inside and out. Avoid scratches on all plastic and varnished parts, do NOT use aggressive detergents.

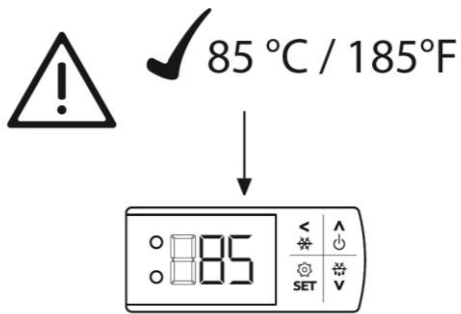
## 4. OPERATION AND USE

### 4.1 Switch on

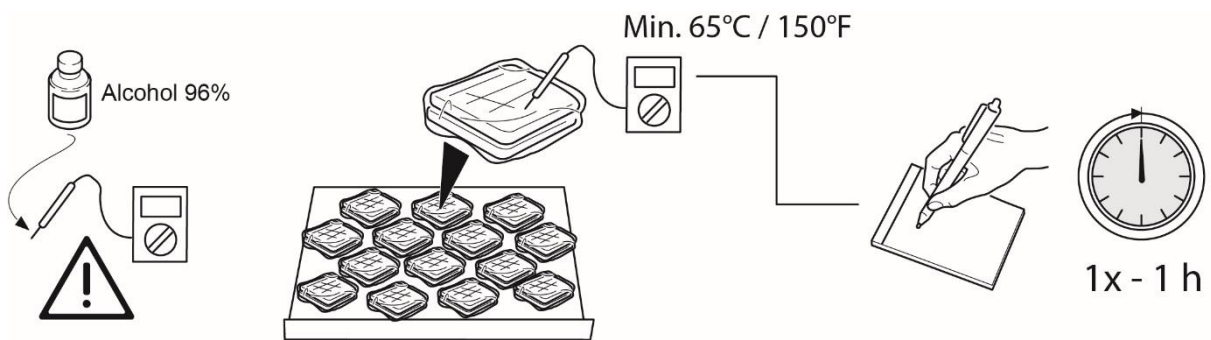


**Note:** Depending on execution can the heating and lighting be switched separately.

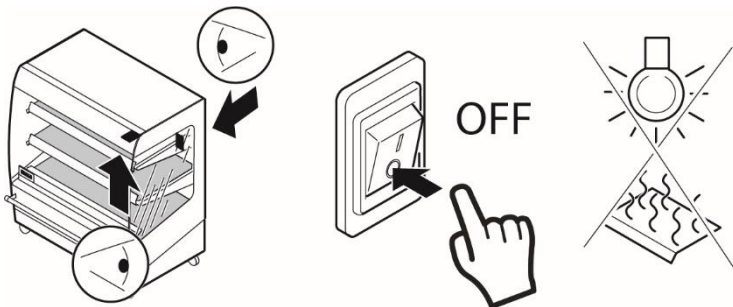
4.2 Checking the temperature in the unit



4.3 Checking the product temperature



4.4 Switch off

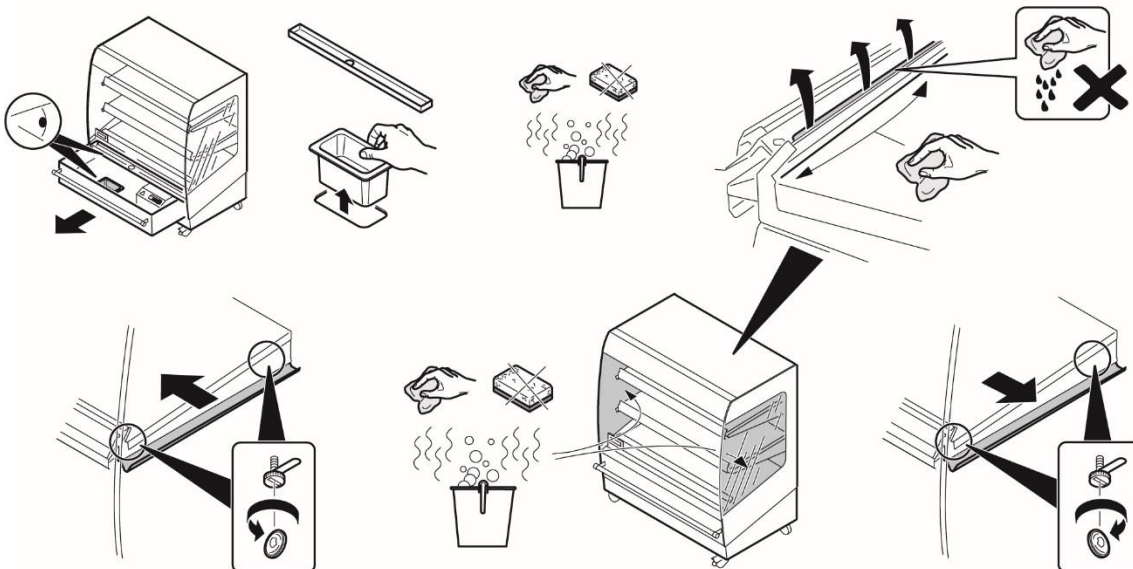
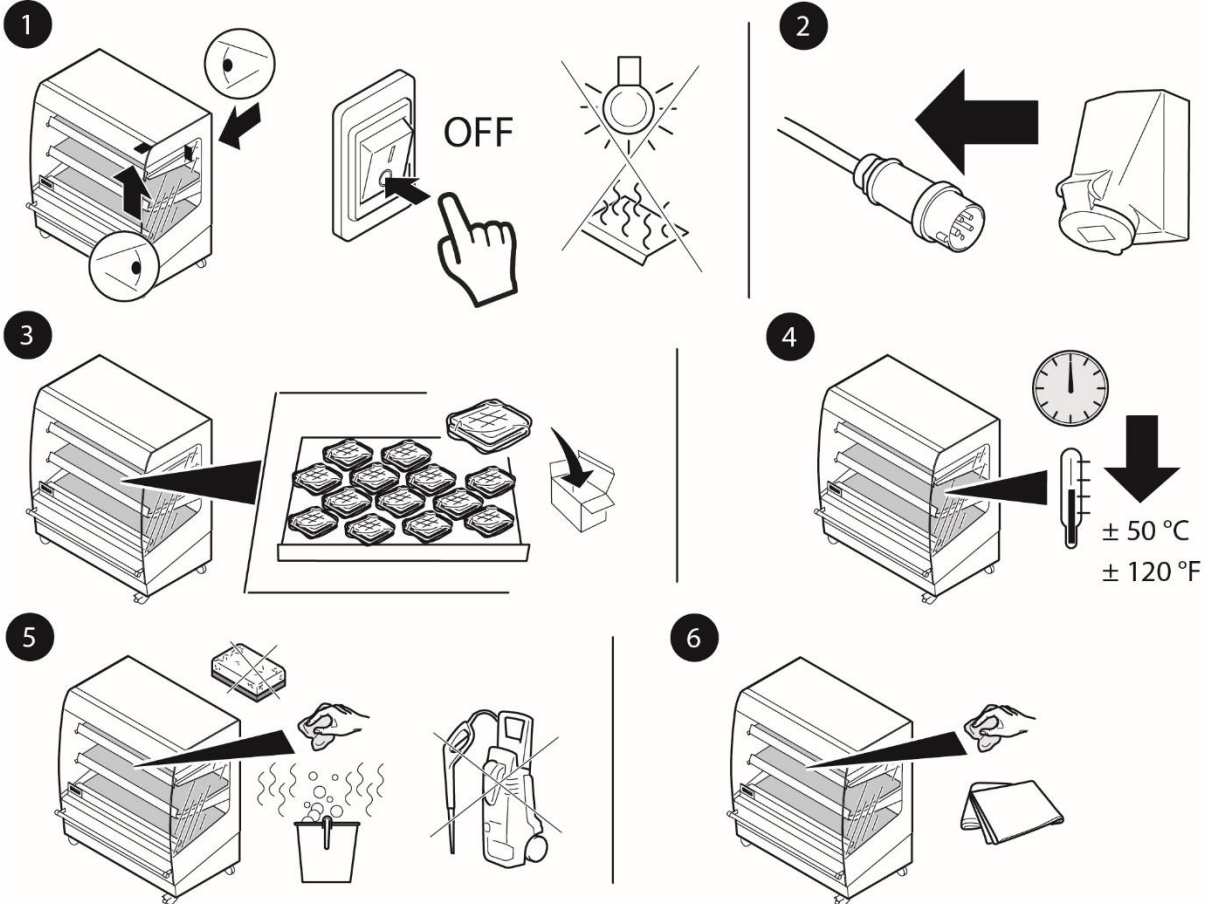


## 5. DAILY MAINTENANCE



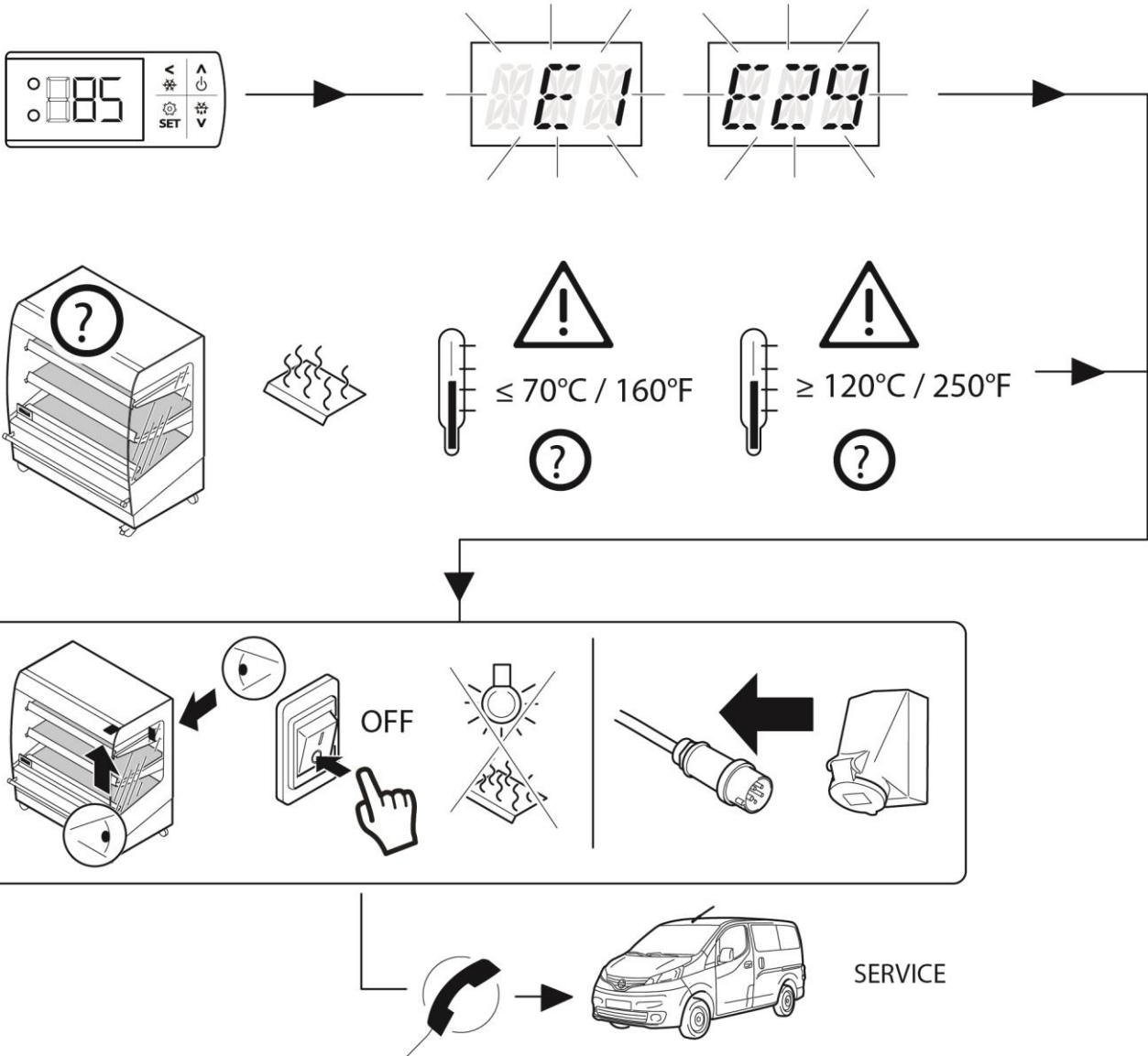
### WARNING

Never use aggressive cleaning agents, abrasive cleaning agents or scouring sponge. Doing otherwise might damage the unit and will void the warranty.

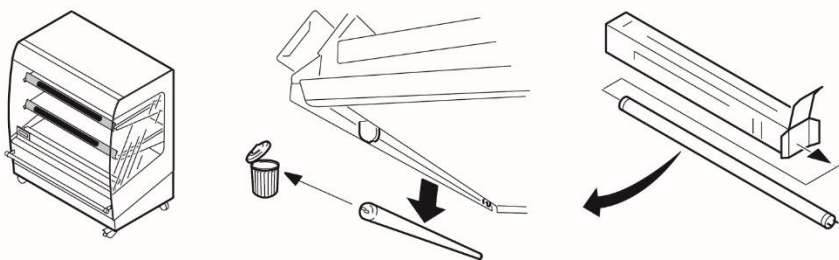
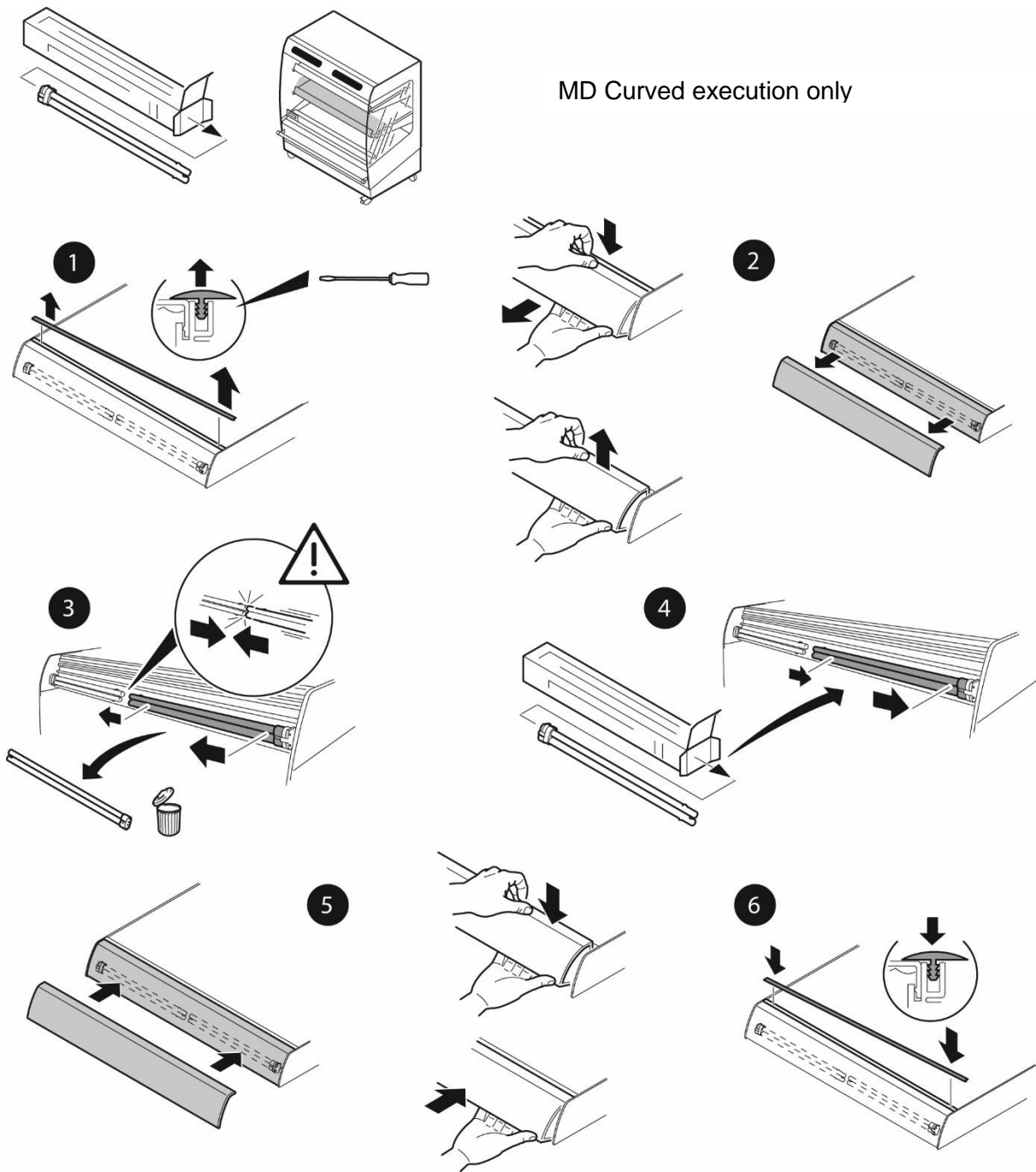


## 6. MALFUNCTIONS AND SERVICE

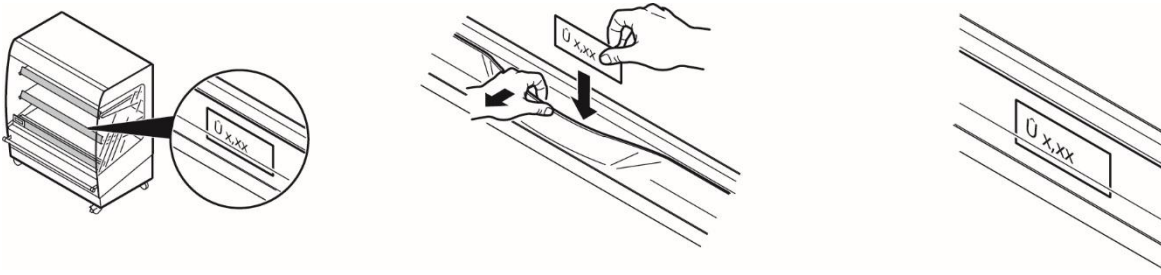
### 6.1 Temperature fault



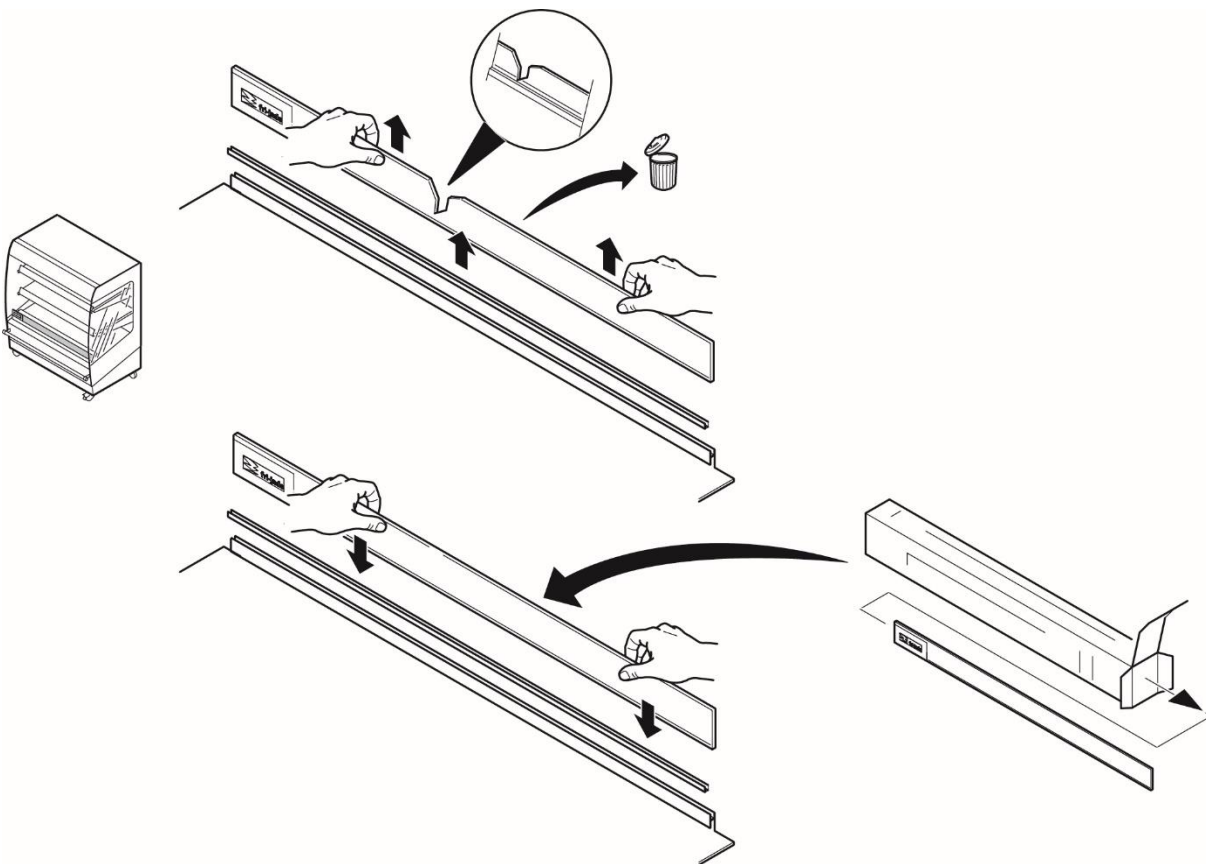
6.2 Replacing a lamp



### 6.3 Placing a price strip



### 6.4 Replacing the child guard



### 6.5 Replacing the mains cord



**WARNING**  
Hazardous electrical voltage.

If the mains cord is damaged, it must be replaced by the manufacturer, by an authorized service agent or a similarly qualified person in order to avoid hazards.

## 7. TECHNICAL SPECIFICATIONS



### WARNING

Consult the identification plate to get the proper specifications of the unit. The electrical data may vary from country to country.

## European Models

Model	MD60	MD100	MD120
<b>Dimensions</b>			
- Width	600 mm	1000 mm	1200 mm
- Depth	800 mm	800 mm	800 mm
- Height 3 level <sup>2</sup>	1420 mm	1420mm	1420mm
- Height 4 level	1972 mm	1972 mm	1972 mm
- Height 5 level	1972 mm	1972 mm	1972 mm
<b>Weight Net approx.</b>			
- 3 level	155 kg	200 kg	215 kg
- 4 level	190 kg	235 kg	250 kg
- 5 level	209 kg	274 kg	300 kg
Sound pressure	< 70 dB(A)	< 70 dB(A)	< 70 dB(A)
<b>Electrical installation 3 level</b>			
Voltage <sup>3</sup>	1N~ 230V	3N~ 400/230V	3N~ 400/230V
Frequency	50/60 Hz	50/60 Hz	50/60 Hz
Required power	2350 W	3490 W	4310 W
Plug	16 A 2 pole + PE	16 A (3~) CEE form	16 A (3~) CEE form
Power cord length	2,40 m	2,40 m	2,40 m
<b>Electrical installation 4 level</b>			
Voltage <sup>3</sup>	1N~ 230V	3N~ 400/230V	3N~ 400/230V
Frequency	50/60 Hz	50/60 Hz	50/60 Hz
Required power	3000 W	4500 W	5400 W
Plug	16 A 2 pole + PE	16 A (3~) CEE form	16 A (3~) CEE form
Power cord length	2,40 m	2,40 m	2,40 m
<b>Electrical installation 5 level</b>			
Voltage <sup>3</sup>	3N~ 400/230	3N~ 400/230V	3N~ 400/230V
Frequency	50/60 Hz	50/60 Hz	50/60 Hz
Required power	3600 W	5400 W	6500 W
Plug	16 A (3~) CEE form	16 A (3~) CEE form	16 A (3~) CEE form
Power cord length	2,40 m	2,40 m	2,40 m

<sup>2</sup> Height MD Eyeline: 1800 mm.

<sup>3</sup> Modification 3N~ 400/230 to 1N~ 230V or 3~230V possible on site, refer to electrical drawing.



## American Models

Model	MD24	MD40	MD48		
Dimensions					
- Width	23 5/8 in	39 3/8 in		47 1/4 in	
- Depth	31 1/2 in	31 1/2 in		31 1/2 in	
- Height 3 level	55 7/8 in	55 7/8 in		55 7/8 in	
- Height 4 level	77 5/8 in	77 5/8 in		77 5/8 in	
- Height 5 level	77 5/8 in	77 5/8 in		77 5/8 in	
Weight Net approx.					
- 3 level	342 lbs	441 lbs		474 lbs	
- 4 level	455 lbs	598 lbs		654 lbs	
- 5 level	461 lbs	604 lbs		660 lbs	
Sound pressure	< 70 dB(A)	< 70 dB(A)		< 70 dB(A)	
<b>Electrical installation 3 level</b>					
Voltage	1~ 208V	1~ 208V	X	1~ 208V	X
Frequency	60 Hz	60 Hz		60 Hz	
Amperage	11.3 A	17 A		21 A	
Plug	NEMA6-20P	NEMA6-30P		NEMA6-30P	
Power cord length	10 ft.	10 ft.		10 ft.	
<b>Electrical installation 4 level</b>					
Voltage	1~ 208V	1~ 208V	3~ 208V	1~ 208V	3~ 208V
Frequency	60 Hz	60 Hz	60 Hz	60 Hz	60 Hz
Amperage	14.2 A	21.6 A	15 A	26.5 A	17.6 A
Plug	NEMA6-20P	<b>Note 1)</b>	NEMA15-20P	<b>Note 2)</b>	NEMA15-30P
Power cord length	10 ft.	<b>Note 1)</b>	10 ft.	<b>Note 2)</b>	10 ft.
<b>Electrical installation 5 level</b>					
Voltage	1~ 208V	1~ 208V	3~ 208V	1~ 208V	3~ 208V
Frequency	60 Hz	60 Hz	60 Hz	60 Hz	60 Hz
Amperage	17.1 A	26.5 A	15 A	32 A	19.1 A
Plug	NEMA6-30P	<b>Note 2)</b>	NEMA15-20P	<b>Note 2)</b>	NEMA15-30P
Power cord length	10 ft.	<b>Note 2)</b>	10 ft.	<b>Note 2)</b>	10 ft.

**Note 1:** Unit supplied with 3 phase cord and plug. Single phase to be converted in the field. Required plug NEMA6-30P and cable 12 AWG.

**Note 2:** Unit supplied with 3 phase cord and plug. Single phase to be converted in the field. Required plug NEMA6-50P and cable 8 AWG.

---

Notes.

---

Notes.

Fri-Jado Inc.  
1401 Davey Road, Suite 100  
Woodridge IL 60517  
USA  
Tel: +1-630-633-7950

[www.frijado.com](http://www.frijado.com)