

INSTALLATION MANUAL

MULTI DECK HOT MERCHANDISERS MD 60 - 100 - 120 PREMIUM

Versions

Solid back 3 - 4 - 5 level
Pass through 3 - 4 - 5 level



MD 60 - 3 solid back



MD 100 - 3 pass through

- NOTICE -

This manual is prepared for the use of trained Service Technicians and should not be used by those not properly qualified. If you have attended a training for this product, you may be qualified to perform all the procedures in this manual.

This manual is not intended to be all encompassing. If you have not attended a training for this product, you should read, in its entirety, the repair procedure you wish to perform to determine if you have the necessary tools, instruments and skills required to perform the procedure. Procedures for which you do not have the necessary tools, instruments and skills should be performed by a trained technician.

Reproduction or other use of this Manual, without the express written consent of Fri-Jado, is prohibited.



EMPTY PAGE

INDEX

Index	3
General technical data	4
Unpacking and mounting of accessories	5
Unpacking MD 60 - 100 - 120 and removing from pallet.....	5
Mounting instructions glass front door	10
Mounting instructions temperature indicator.....	18
Mounting instructions cross-selling drawer	19
Mounting instructions cross-selling top	20
Mounting instructions lower skirts.....	21
Installation	23
Location.....	23
Installation	23
General.....	23
Casters	24
Thermometer (9229801).....	24
Before first use.....	24
Instructions for operators.....	24
Placing and connecting	25
Multi Deck 60 - 3 level	25
Multi Deck 100 - 3 level	26
Multi Deck 120 - 3 level	27
Multi Deck 60 - 4 level	28
Multi Deck 100 - 4 level	29
Multi Deck 120 - 4 level	30
Multi Deck 60 - 5 level	31
Multi Deck 100 - 5 level	32
Multi Deck 120 - 5 level	33

GENERAL TECHNICAL DATA

This manual covers the Multi Deck 60-100-120 Hot 3 - 4 and 5 level series Merchandiser cabinets. The cabinets come in 3 sizes: 60, 100 and 120 centimeter, and in 2 different heights: 1420 mm for the 3 level version and 1972 mm for the 4 and 5 level version.

- Multi Deck 60 in 3 - 4 - 5 level - Merchandiser 600 mm wide.
- Multi Deck 100 in 3 - 4 - 5 level - Merchandiser 1000 mm wide.
- Multi Deck 120 in 3 - 4 - 5 level - Merchandiser 1200 mm wide.

All of the information, illustrations and specifications contained in this manual are based on the latest product information available at the time of printing.

TECHNICAL DATA

Type	MD 60 - 3	MD 60 - 5	MD 100-3	MD 100-5	MD 120-3	MD 120-5
Power (W)	2400	3600	3500	5400	4300	6500
Fuses needed with power connection 230V, 1N ~ 50...60Hz (1 phase with zero)	1x 16 A	1x 16 A	1x 16 A	–	–	–
Fuses needed with power connection 400V, 3N ~ 50...Hz (3 phases with zero)	–	3x 16 A	3x 16 A	3x 16 A	3x 16 A	3x 16 A
Fuses needed with power connection 400V, 3 ~ 50...60Hz (3 phases without zero)	–	3x 16 A	3x 16 A	3x 16 A	3x 16 A	3x 20 A
Standard plug from factory single pole	Two-pole earthed plug 16 A	–	–	–	–	–
Standard plug from factory 5- pole Acc IEC309 and CEE-form	–	16 A 3P+N+E	16 A 3P+N+E	16 A 3P+N+E	16 A 3P+N+E	16 A 3P+N+E
Net weight (kg)	155	209	200	274	215	300
Gross weight (kg)	182	246	235	322	253	353
Height (mm)	1420	1972	1420	1972	1420	1972
Width (mm)	600	600	1000	1000	1200	1200
Depth (mm)	800	800	800	800	800	800

Tools

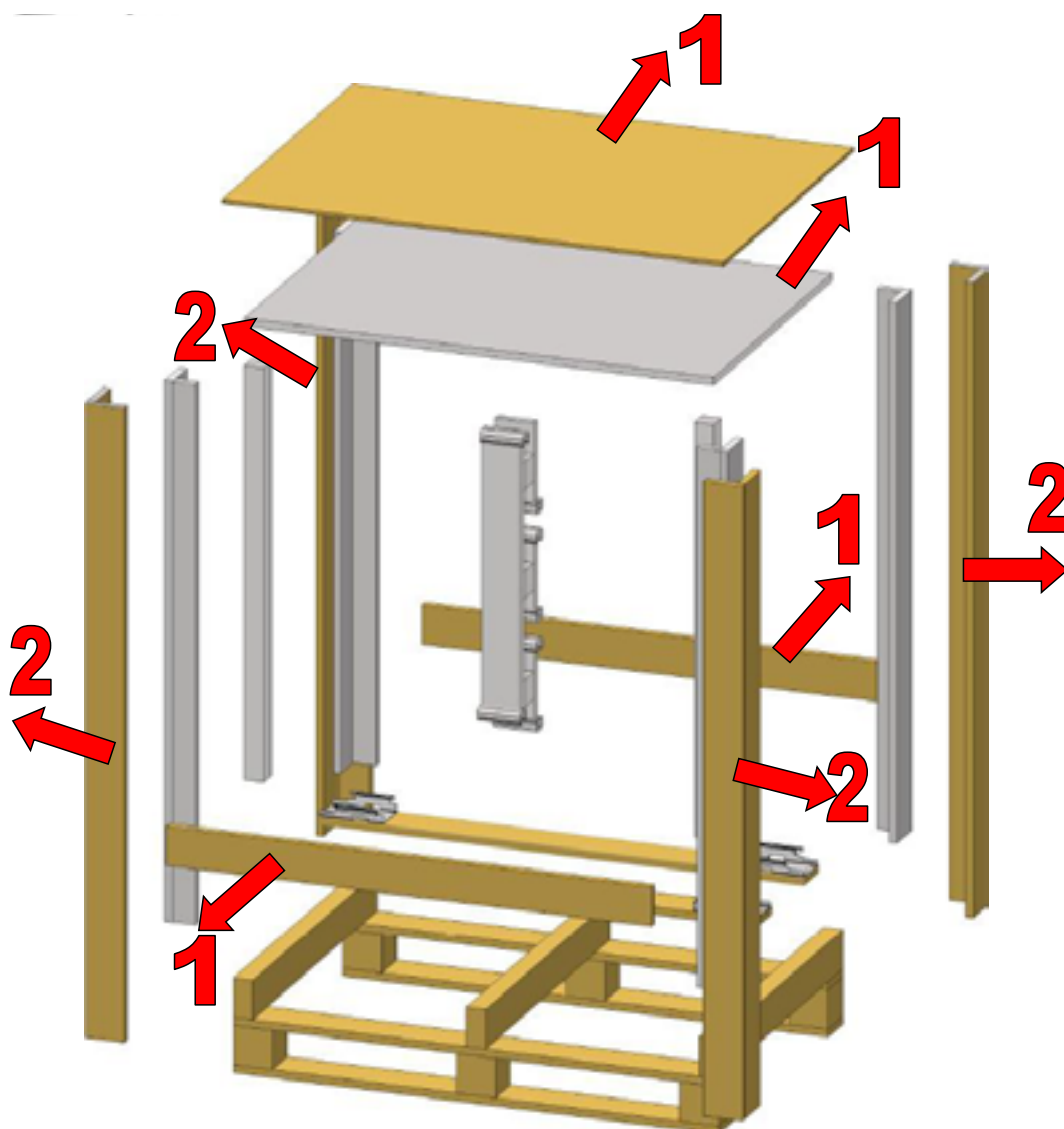
- Standard set of tools.
- Metric wrenches, sockets and hex socket key wrenches.
- Multi-meter and AC current clamp meter.
- Insulation value tester (Megger)
- Temperature tester.

UNPACKING AND MOUNTING OF ACCESSORIES

- Unpacking of the unit.
- Put the unit on his location.
- Unpack and install all separately packed parts.
- Remove all vinyl protection.
- Check if there is enough free space around the unit.
- Check the electrical supply.
- Check all settings and make a test run with all functions switched on.
- Give instructions to the operator.

UNPACKING MD 60 - 100 - 120 AND REMOVING FROM PALLET

- Follow the instructions as given in the next pages.
- Read the instructions before proceeding.
- Perform this action safely with two persons.



Removable parts of packaging



Remove side beams 2x



Remove topplate



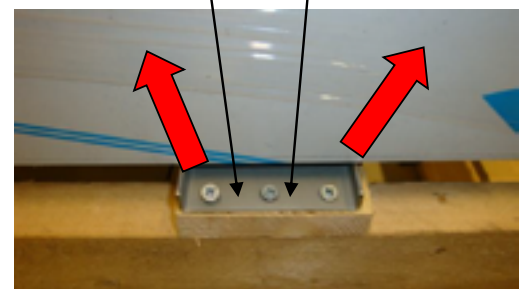
Remove protection top



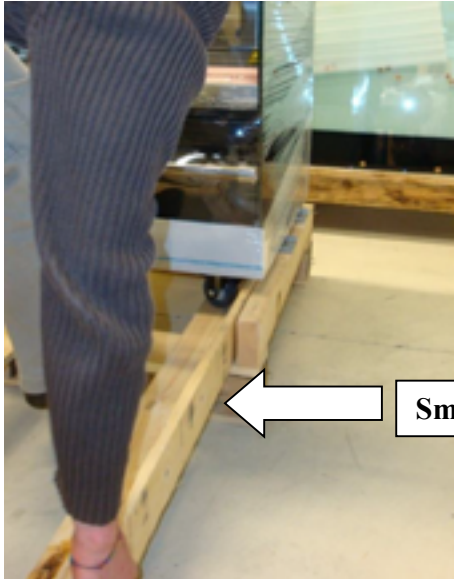
Remove vertical beams and protection on front side



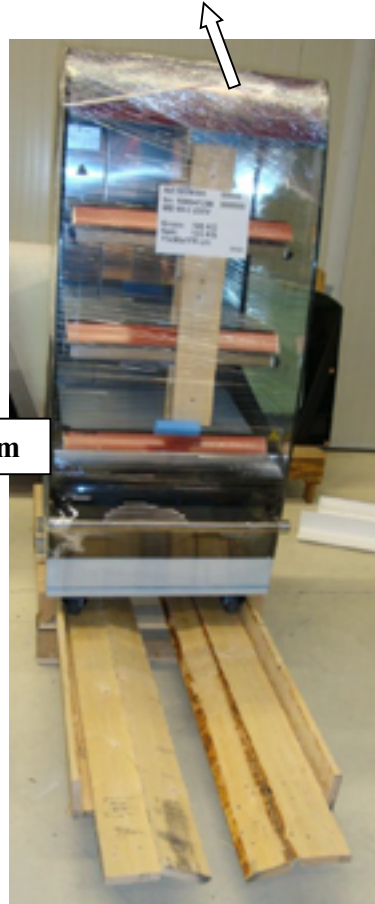
Remove vertical beams and protection on backside



**Remove outer screw 4x2
Leave middle screw in place**



← Small side of beam



**Place vertical beam under cabinet
On both sides**



**Front view
1 beam left + 1 beam right**

**Tilt cabinet slightly
Place under front wheels of cabinet**



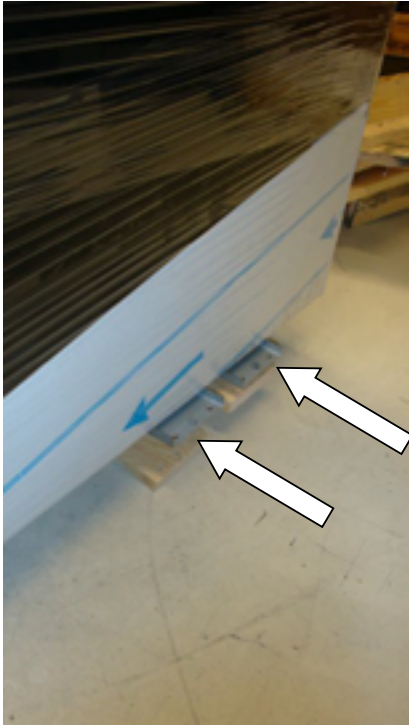
Flatten 2 remaining beams



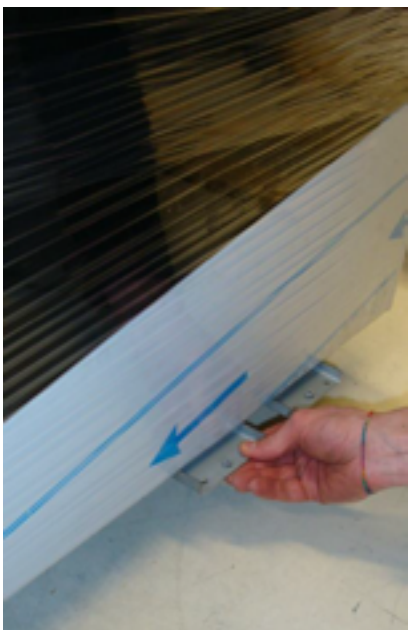
Carefully slide unit onto floor

 **WARNING**

Prevent the unit from rolling away
on the casters.



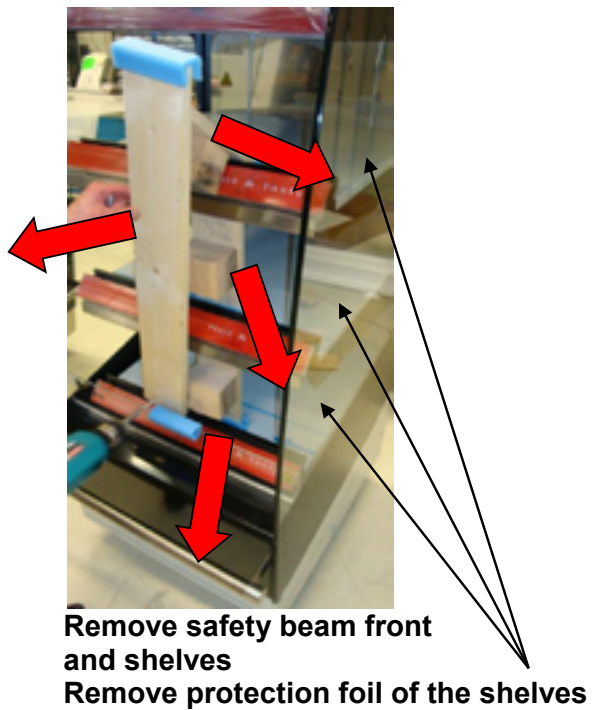
Remove remaining screws



Remove protection foil

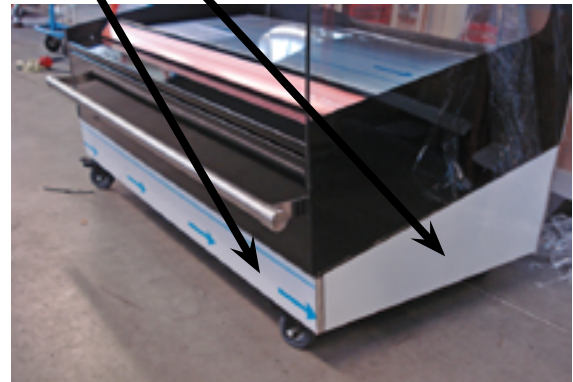
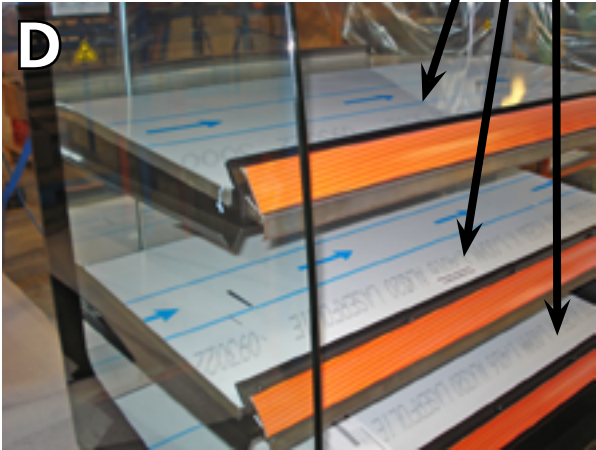


Remove 3x screw transport safety



Remove safety beam front
and shelves
Remove protection foil of the shelves

Remove protective cover of stainless steel shelves, bottom and skirts.



MOUNTING INSTRUCTIONS GLASS FRONT DOOR

**Mounting instruction of the glass door MD 60
(Two doors for MD 100 and MD 120)**

1. Open the drawer



2) Remove the two M5 nuts inside the cabinet.



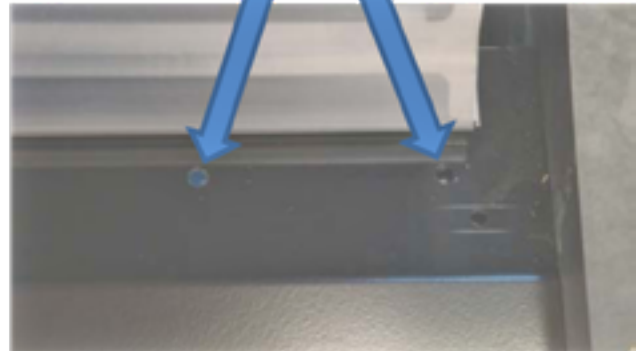
3) Lift transparent plate.



4) Remove transparent plate.



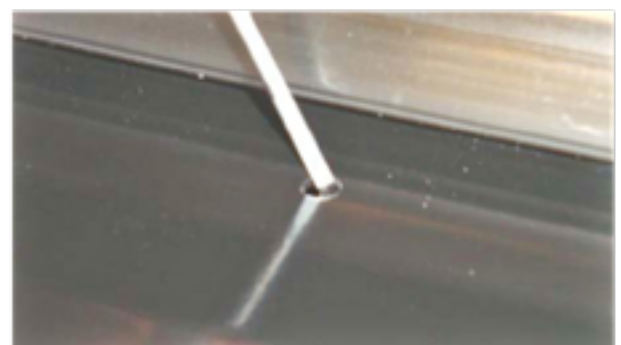
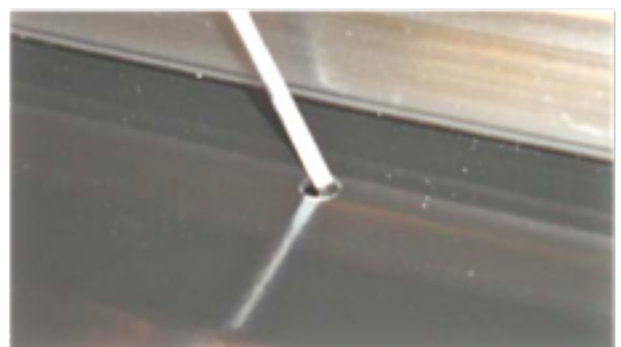
5) Punch out two holes (on both sides for MD 100 and MD 120)



Before:



After:



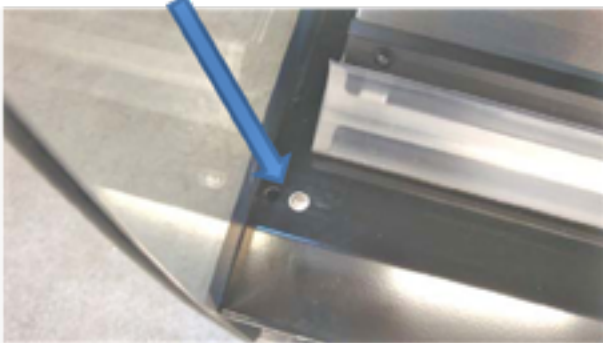
6) Unpack supplied mounting bolts, washers and nuts.



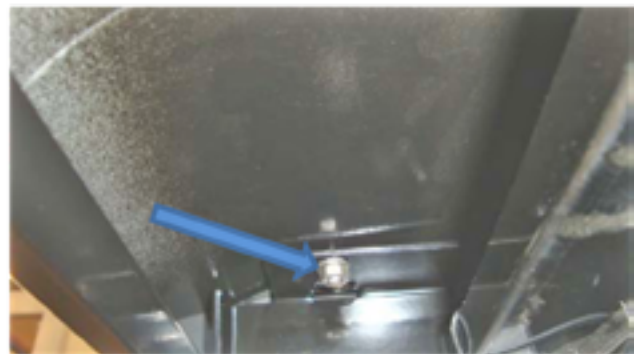
7) Mount both Phillips-head screws in holes left by transparent plate.



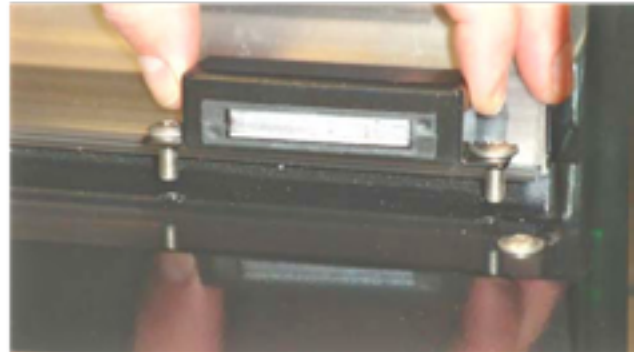
7a) Phillips-head screw on top.



7b) Washer and nut on inner side cabinet.



8) Unpack magnetic lock and mount as indicated. (See step 16 for MD 100 and MD 120)
(Use punched through holes, made in step 5.)



NOTE: magnetic strips must be facing the operator. (See step 16 for MD 100 and MD 120)
Washers must be mounted, and nuts must be fastened inside cabinet, similar as in step 7b.



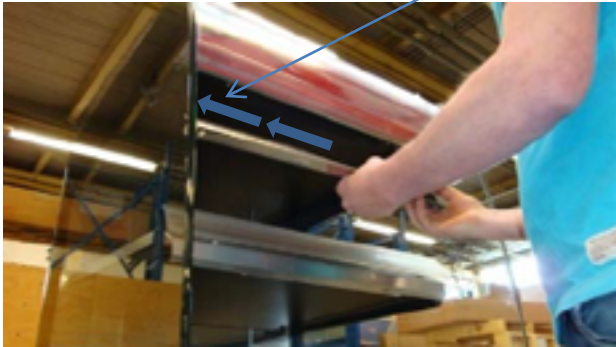
9) Unpack door guard.



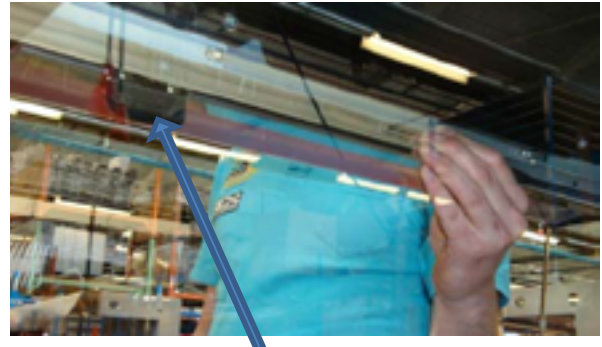
10) Apply door guard as indicated.

Make sure that guard is mounted to the **utmost left position** inside the cabinet!

10a)



10b)

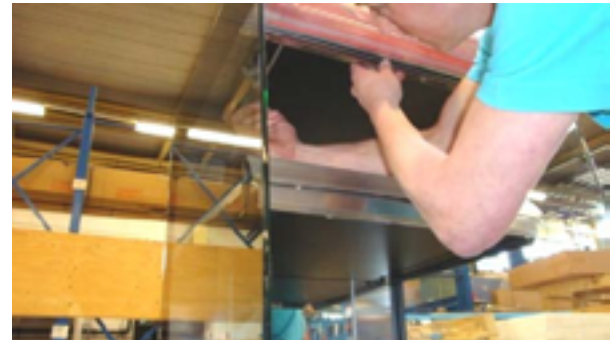


After placement, two rubber protection pads must face glass door.

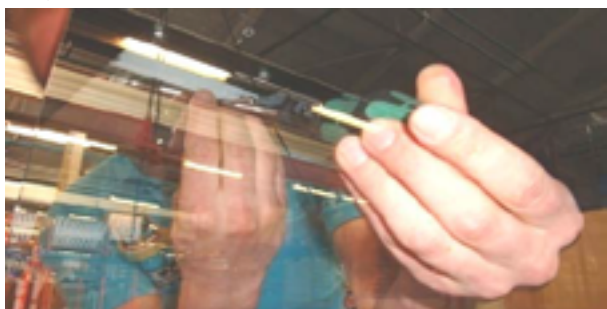
10c)



10d)



10e)

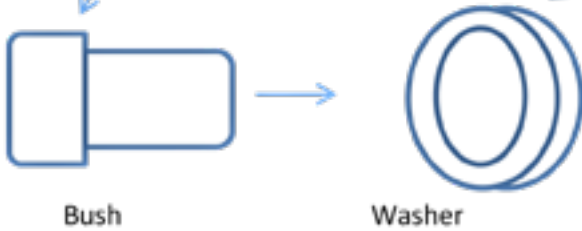
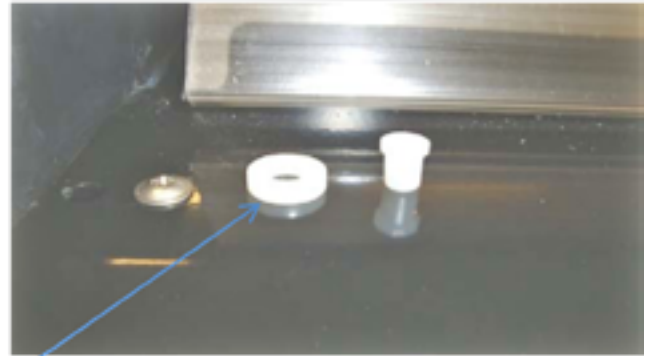
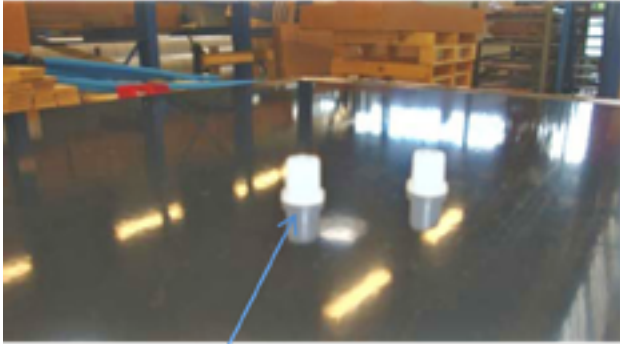


Screws must be inserted to aluminium profile.

Mounting of door:

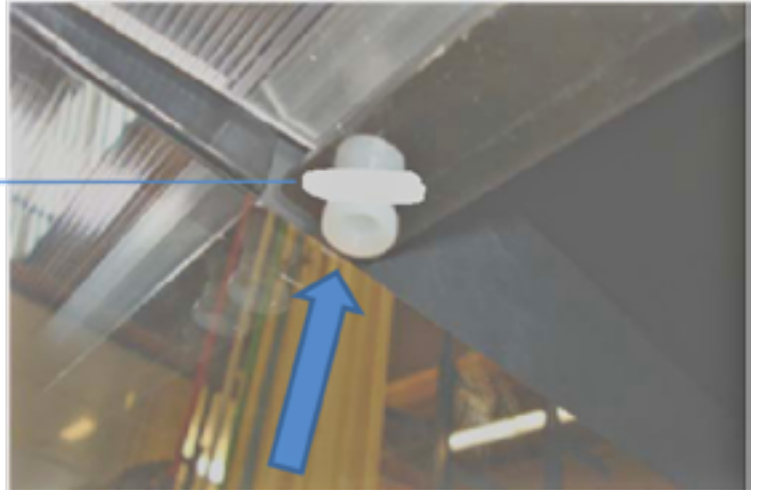
11) Prepare upper and lower hinge:

11a) Apply white plastic washers and bushes as indicated.

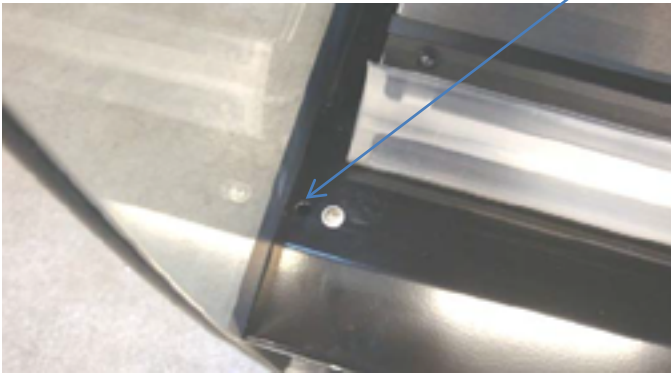


NOTE: use washer for both hinges.

11b) Insert bush and 3 mm washer for top hinge.



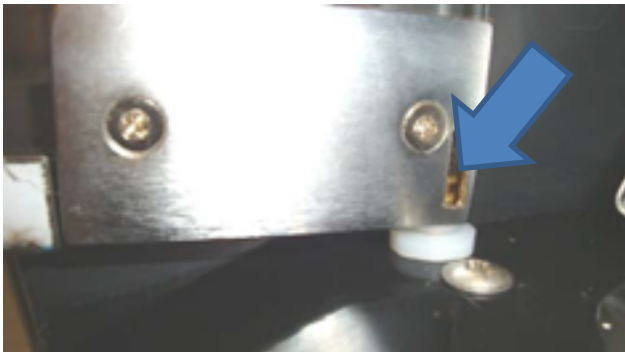
11c) Insert bush with 3 mm washer in left most hole in bottom plate for lower hinge.



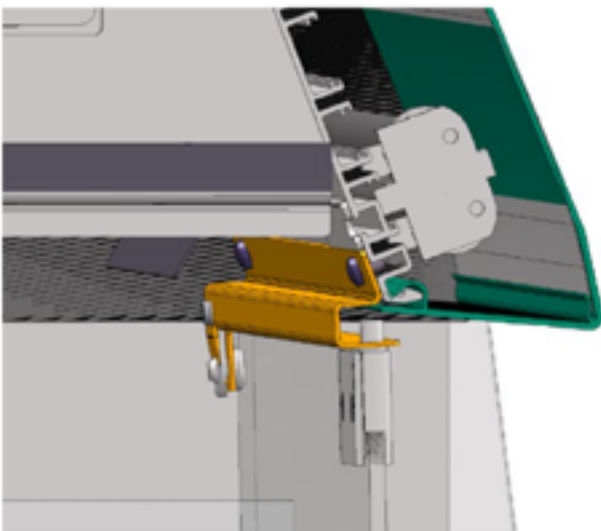
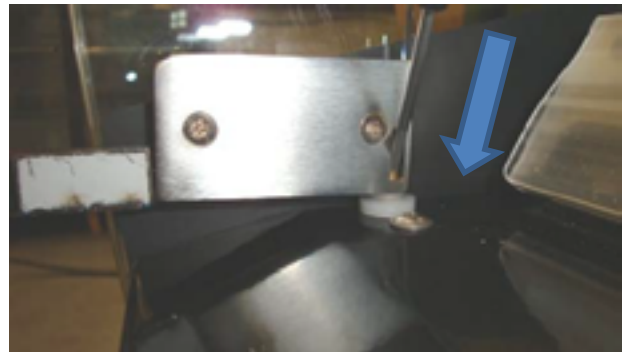
12) Insert glass door in bushes.

12a) Bottom hinge:

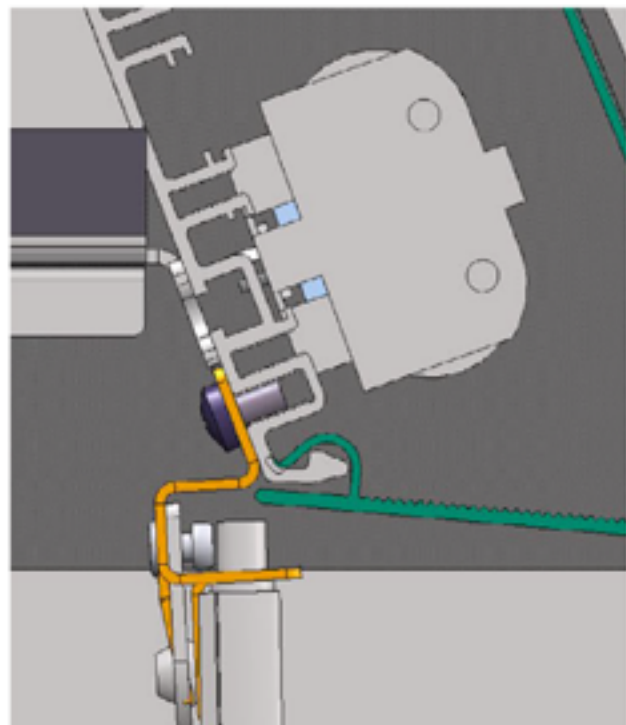
Insert lower protrusion of door, into bush.



Push down copper interior hinge with screwdriver.



Position of door guard (yellow coloured profile)

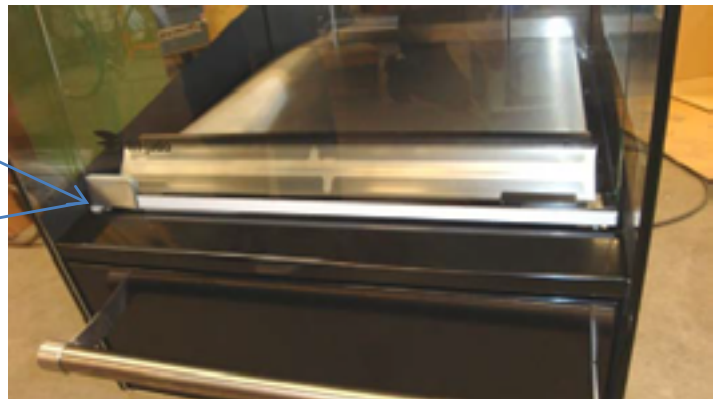


12b) Mount top hinge as described in step 12a.

13) Test hinges by opening and closing glass door.

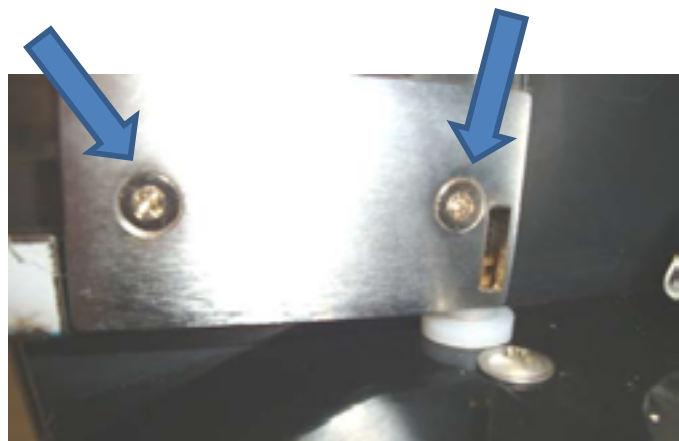


14) NOTE: if bottom side of door touches the metal plate underneath, the door must be lifted. To do this, a **1.6 mm** plastic washer must be added to the 3 mm washer under the lower hinge.



15) If needed, both hinges can be shifted in their consoles by loosening screws. (picture shows bottom hinge).

Fasten both screws after adjustment!



16) Models MD 100 and MD 120:

Magnetic lock must be placed in the centre, to close both doors.



Part number	Description
9229813	Front door ass. MD 60-3
9229814	Front door ass. MD 60-5
9229833	Front door ass. MD 100-3
9229834	Front door ass. MD 100-5
9229853	Front door ass. MD 120-3
9229854	Front door ass. MD 120-5

MOUNTING INSTRUCTIONS TEMPERATURE INDICATOR

1) temperature indicator can be fixed in 2 ways:

- * by means of the magnets
- * by means of the magnets + screws



2) increased visibility

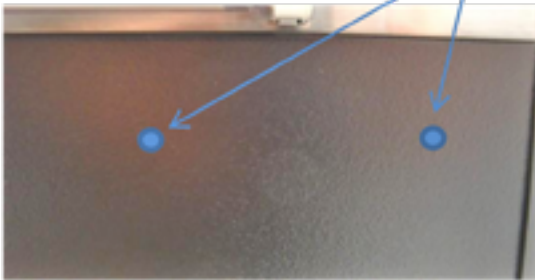


3) remove both knock-outs on the right hand side under shelf.

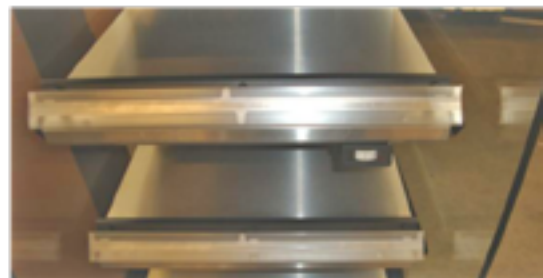
Possible to mount under all shelves, except bottom shelf.

Note: Be careful by pressing the knock out to the inside.

Heating element on the inside is placed 15mm from bottom side.

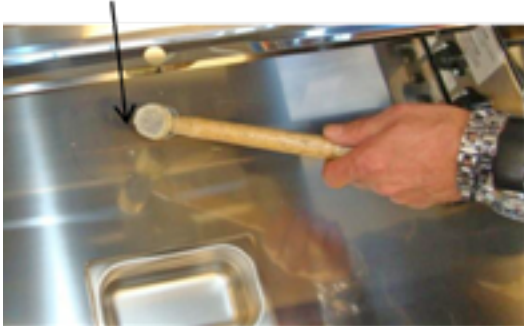


4) secure the temperature indicator with 2 screws. Max. length of screws is 15mm



MOUNTING INSTRUCTIONS CROSS-SELLING DRAWER

1) remove the knock-out



2)



3) place the cross-selling drawer over the drawer



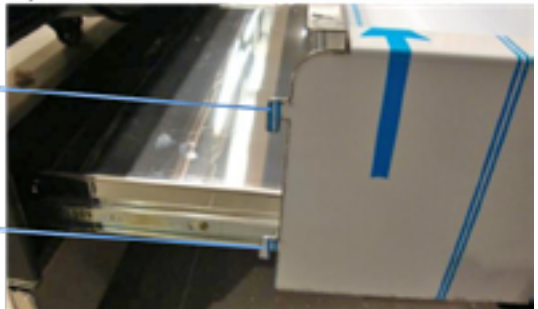
4)



5)



6)



7)



MOUNTING INSTRUCTIONS CROSS-SELLING TOP

1)

Warning !**Disconnect the power before
changing the top**

2) remove the 2 caps



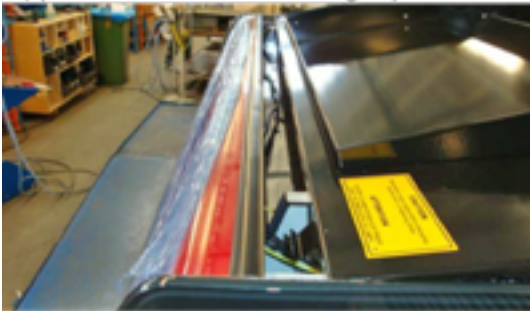
3) remove the screws



4) remove the top



5) place the new cross selling top



6) replace the screws



7) replace the new caps



MOUNTING INSTRUCTIONS LOWER SKIRTS

1) Open the drawer



2) Remove the screw on the left and right hand side, and remove the cover plate.



3) Remove the screws left and right on the back side, and remove the cover plate.



4) Left and right side: (front) remove the screw, and slide the cover plate backwards.



5) Determine where the power cord has to come out of the machine (left, right, back or front) and remove the knock-out of the corresponding lower skirt.



6) Mount 2 lower skirts on the left and right hand side with 2 screws.



7) Mount both cover plates on the left and right hand side with a screw.



8) Note: cover plate fits in slots.



9) Fasten the screw.



10) Mount back cover plate on the back side inside the slots. Note:



11) Fasten the screws.



12) Mount the lower skirt on the back side and fasten the screws.



13) Mount the cover plate on the front side and fasten the screws.



14) Remark:

Put the brakes onto the front swivel castors!
Place the unit on the right place before mounting the front lower skirt.
When the front lower skirt is mounted, you can not move the unit, because the front swivel castors will turn against the front metal skirts!

15) Mount the front lower skirt with 2 screws.



INSTALLATION

Immediately after unpacking the merchandiser, check for possible shipping damage. If the merchandiser is found to be damaged, save the packaging material and contact the carrier within 15 days of delivery. Prior to installation, test the electrical service to assure that it agrees with the specifications on the machine data plate located on the right side panel near the controls.

LOCATION

The merchandiser must be installed on a level surface. The installation location must allow adequate clearances for servicing and proper operation.

INSTALLATION

The connecting cable for the unit must be equipped with an approved plug connection. If use is to be made of a permanent connection, the connecting cable must be connected to a manual on/off switch that is installed near the unit in a clear visible manner.

GENERAL

The minimum temperature of the environment should be 20°C for the Multi Deck 60/100/120 hot. The maximum temperature of the environment should be 22°C and the relative humidity should be maximum 65%.

Note: Strong air-currents due to draughty doors, air-conditioning outlets etc. will be detrimental to the proper operation.

Note: *The minimum temperature of the hot products that are loaded inside the Multi Deck must be 85°C.*

Note: *The maximum load per shelf is 20 kg. The load must be equally distributed over the shelf.*

CASTERS

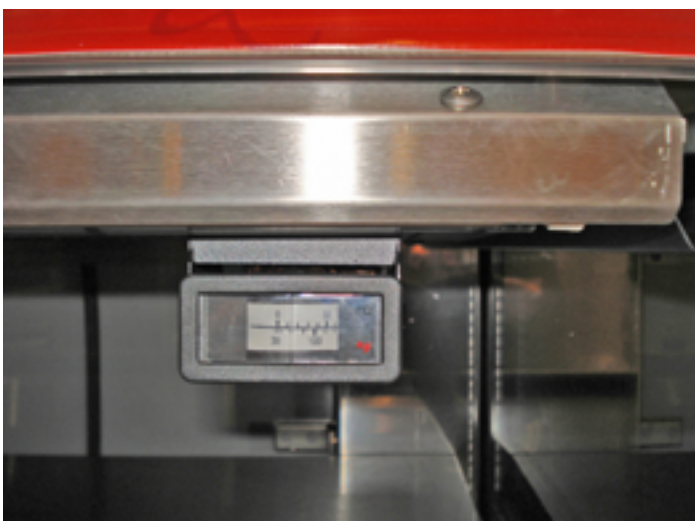
Each merchandiser is furnished on 4 casters of 80 mm. The Multi Deck 60 has 2 rigid casters on the back side and 2 locking swivel casters on the customer side. The Multi Deck 100/120 is furnished with 2 swivel casters on the back side and 2 locking swivel casters on the customer side.

THERMOMETER (9229801)

If a separate thermometer is ordered you can click this with the magnets under the 2 top shelves.

In the 2 top shelves, on the left and right hand side in the front, there are 2 knock-outs of \varnothing 2.5 mm. Tap these small holes out with a small screwdriver and fit the thermometer with two screws.

See also separate mounting instructions on page 18.



BEFORE FIRST USE

Operate the Multi Deck 60/100/120 at maximum temperature setting to insure the proper working of the unit.

INSTRUCTIONS FOR OPERATORS

After installation of the Multi Deck, the operator of the unit has to be instructed. The instruction has to cover the following subjects:

- How to switch the unit on.
- Working of the unit.
- Run through the user manual.
- How to react for information or service calls.

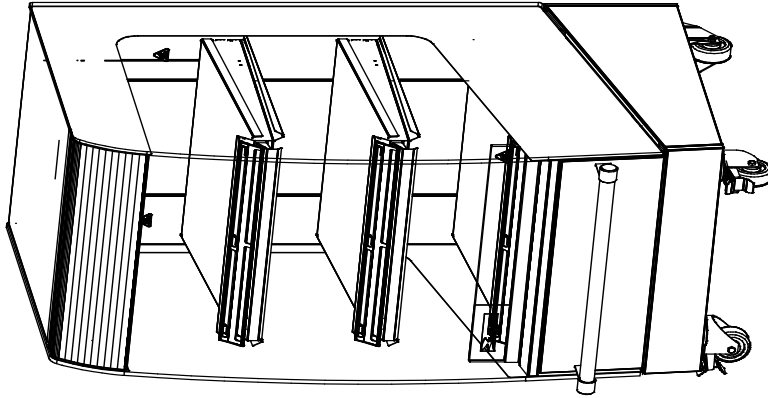
PLACING AND CONNECTING

Description belonging to the labels on the drawings

Label	Description
1	Power cable, length 2,5 meters *

*) length is measured from the point where the cable comes out of the unit

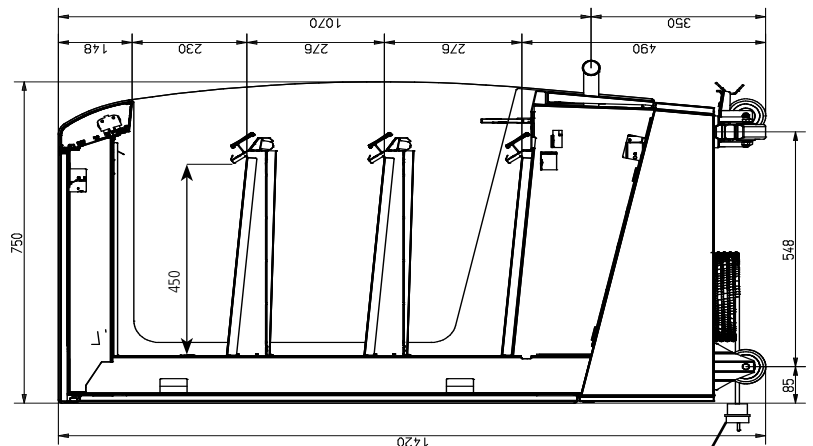
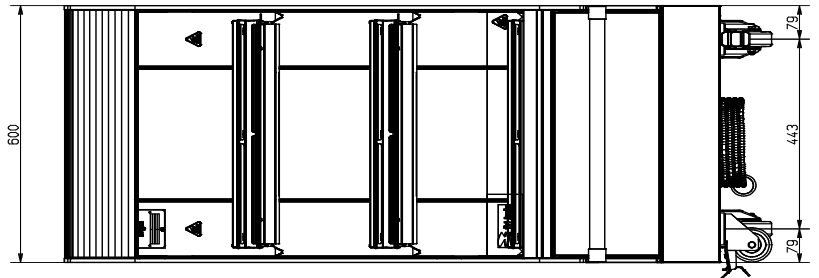
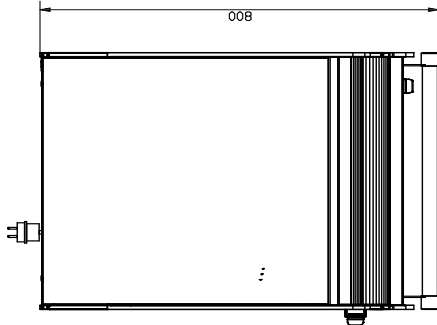
MULTI DECK 60 - 3 LEVEL



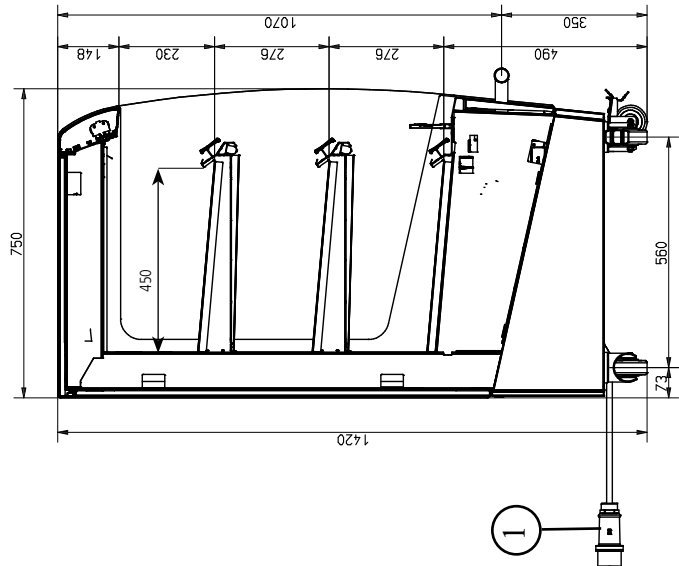
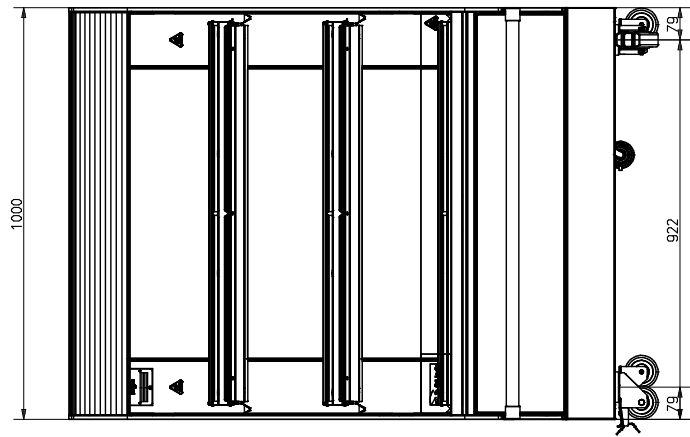
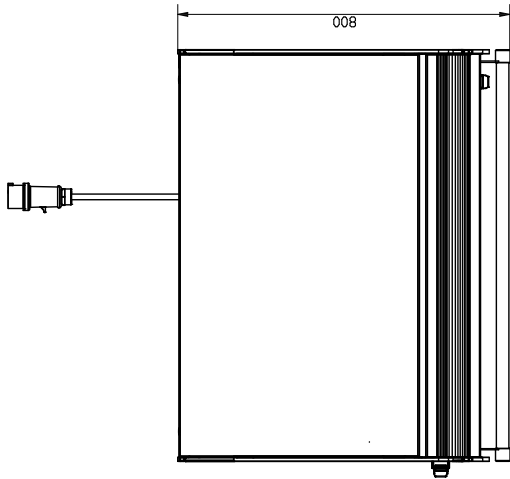
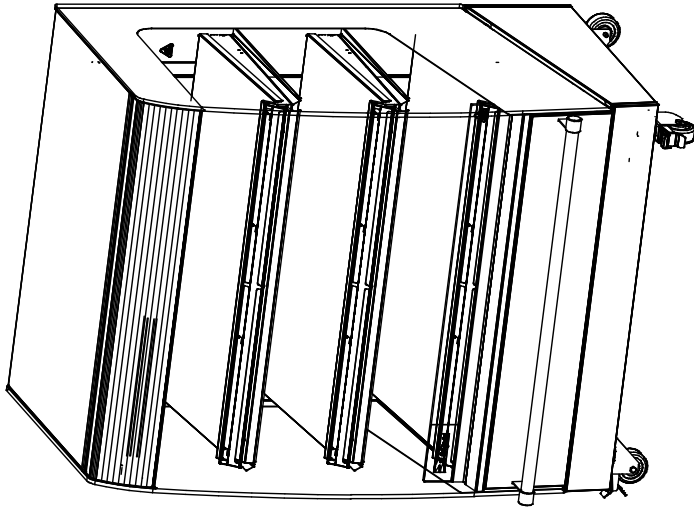
revision	revision date	description revision	revision date	revision	checked	scale	size	drawn by	drawn number	revision date	revision	checked	scale	size	drawn by	drawn number
E	19.10.2009	Update accessoires	19.10.2009	E			A3			19.10.2009	E			A3		
D	19.03.2009	Nieuw frame en hoogte				1:10		V. Dorst	9279300	09.02.2009						

Description: MD 60-3 230V
 for product: MD60 hot
 material: -
 shelves: 3 shelves
 tolerance class: A

fri-jado
 Oude Kerkestraat, 2
 4878 AA Etten-Leur
 Postbus 590
 Tel.: +31 (0)78-5985400
 Fax: +31 (0)78-5985444

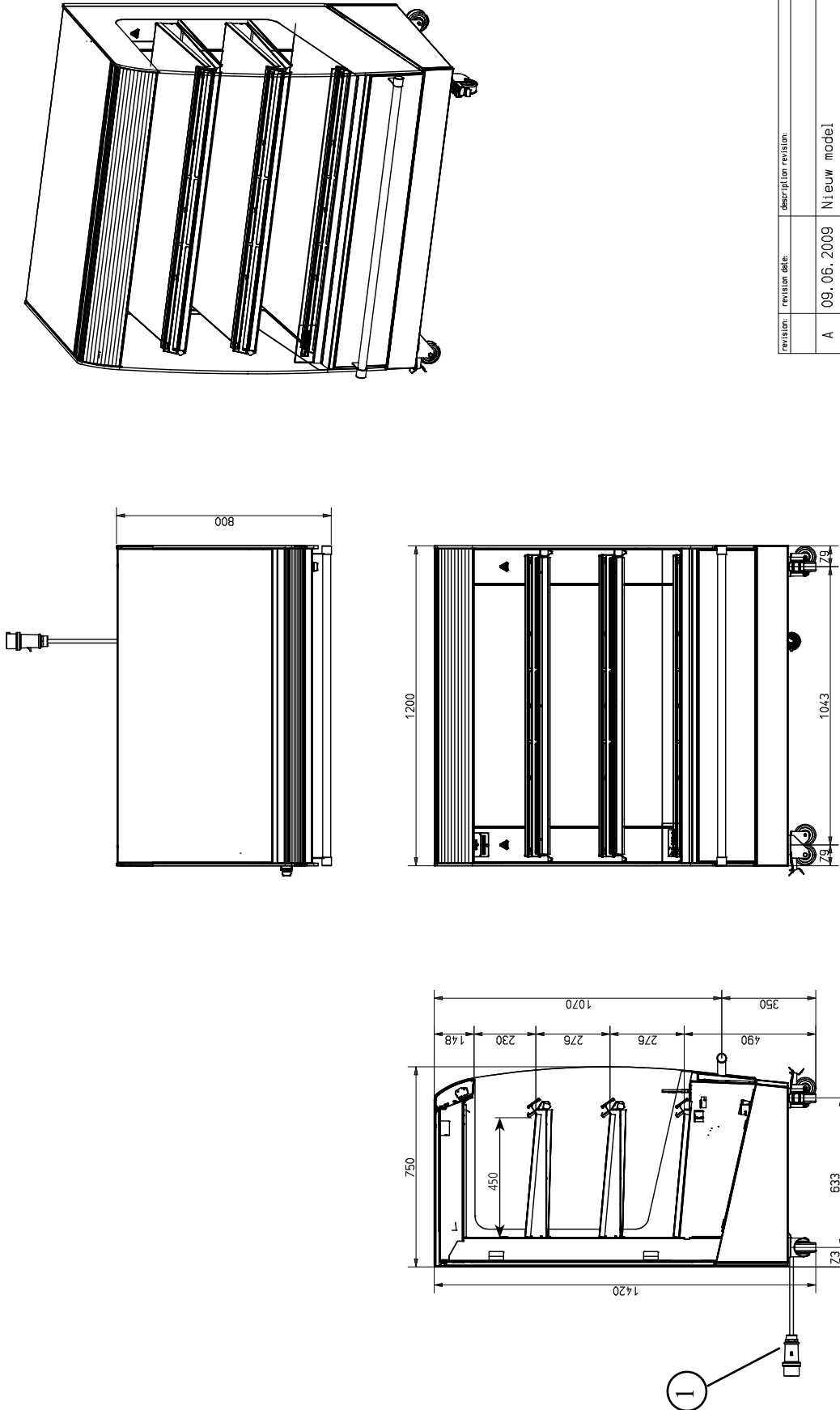


MULTI DECK 100 - 3 LEVEL



revision:	revision date:	description:	revision:	revision date:	tolerance class:
					A
description:		MD 100-3 400V			
for product:		MD100 hot			
material:		3 shelves			
checked:	thickness:	revision:	revision date:	date:	10.06.2009
scale:	1:12	status:	drawn by:	drawn number:	9229310
size:	A3	drawn by:	V. Dorst		
		Oude Kerckestraat 2 4878 AA Ellen-Leur Postbus 590 4870 AN Ellen-Leur tel: +31 (0)76-5085400 fax: +31 (0)76-5085444			

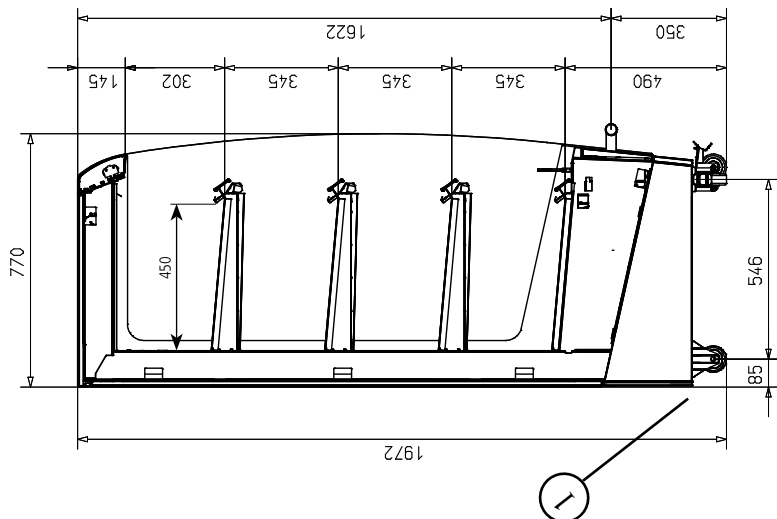
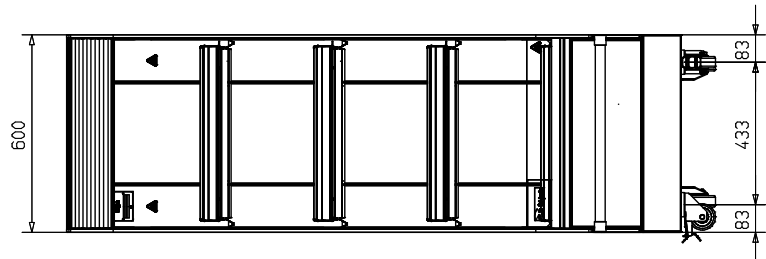
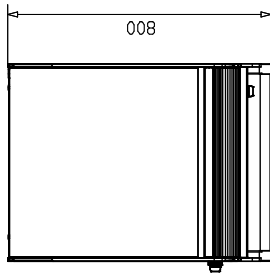
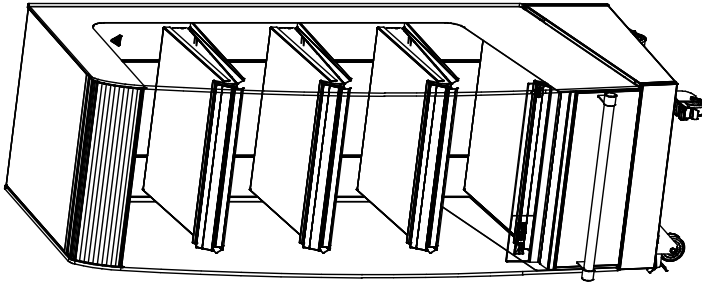
MULTI DECK 120 - 3 LEVEL



revision:	revision date:	description revision:	
A	09.06.2009	Nieuw model	
description:		MD 120-3 400V	
for product:	MDT20 hot		
material:	3 shelves		
thickness:	treatment:	tolerance class:	
checked:	revision:	revision date:	
scale:	A	09.06.2009	
1:15	status:	date:	
A3		06.02.2009	
size:	drawn by:	drawing number:	
A3	V. Dorst	9279320	

fri-jado
 Oude Kerkstraat 2
 4878 AA Ellen-Leur
 Postbus 560
 tel: +31 (0)76-5985400
 fax: +31 (0)76-5985444

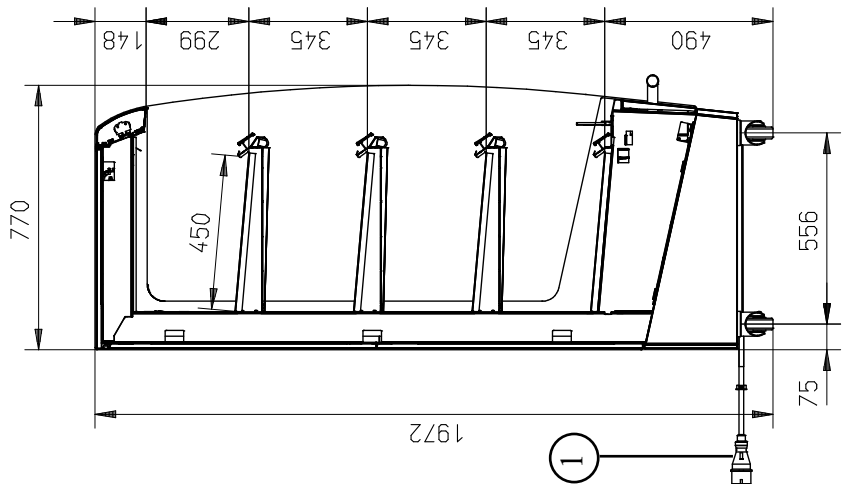
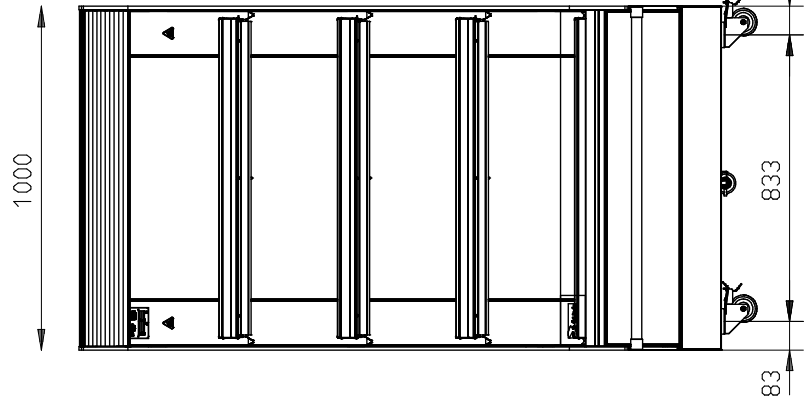
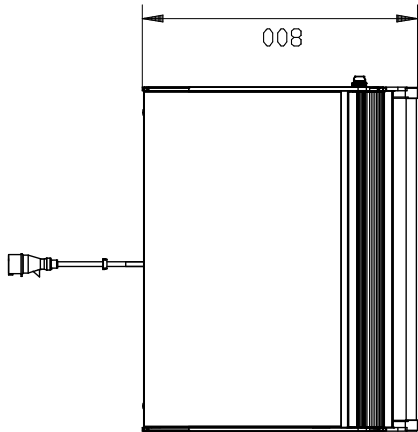
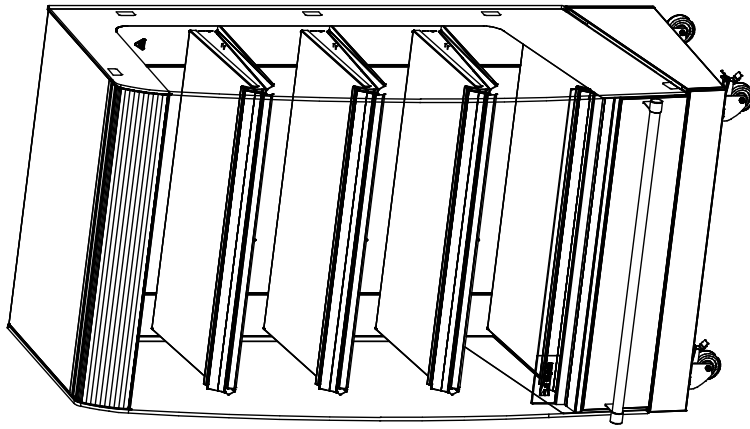
MULTI DECK 60 - 4 LEVEL



revision:	revision date:	description/revision:	
A	17.06.2011	Vier laags in vijf laags casco	
description:		MD 60-4 230V	
for product:		MD60 hot	
material:		4 shel ves	
checked:	checked:	thickness:	tolerance class:
A	A	-	-
revision date:	revision date:	revision:	revision date:
17.06.2011	17.06.2011	A	17.06.2011
status:	status:	scale:	date:
-	-	1:15	27.11.2009
drawn by:	drawn by:	size:	drawing number:
V. Dorst	V. Dorst	A3	9229330

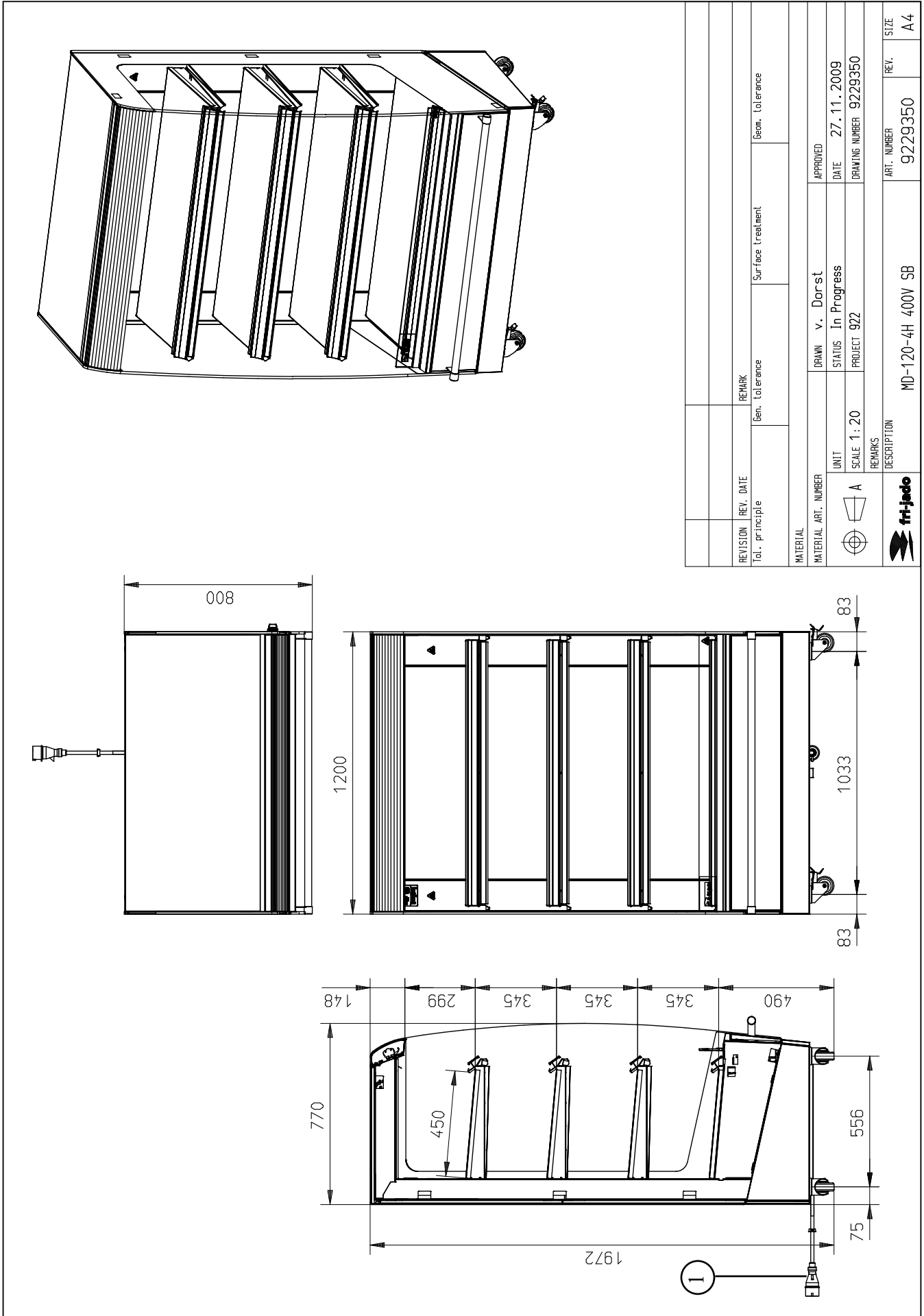
fri-jado
 Oude Kerstlaan 2
 4878 AA Etten-Leur
 Postbus 560
 4870 AN Etten-Leur
 tel: +31 (0)78-5085400
 fax: +31 (0)78-5085444

MULTI DECK 100 - 4 LEVEL

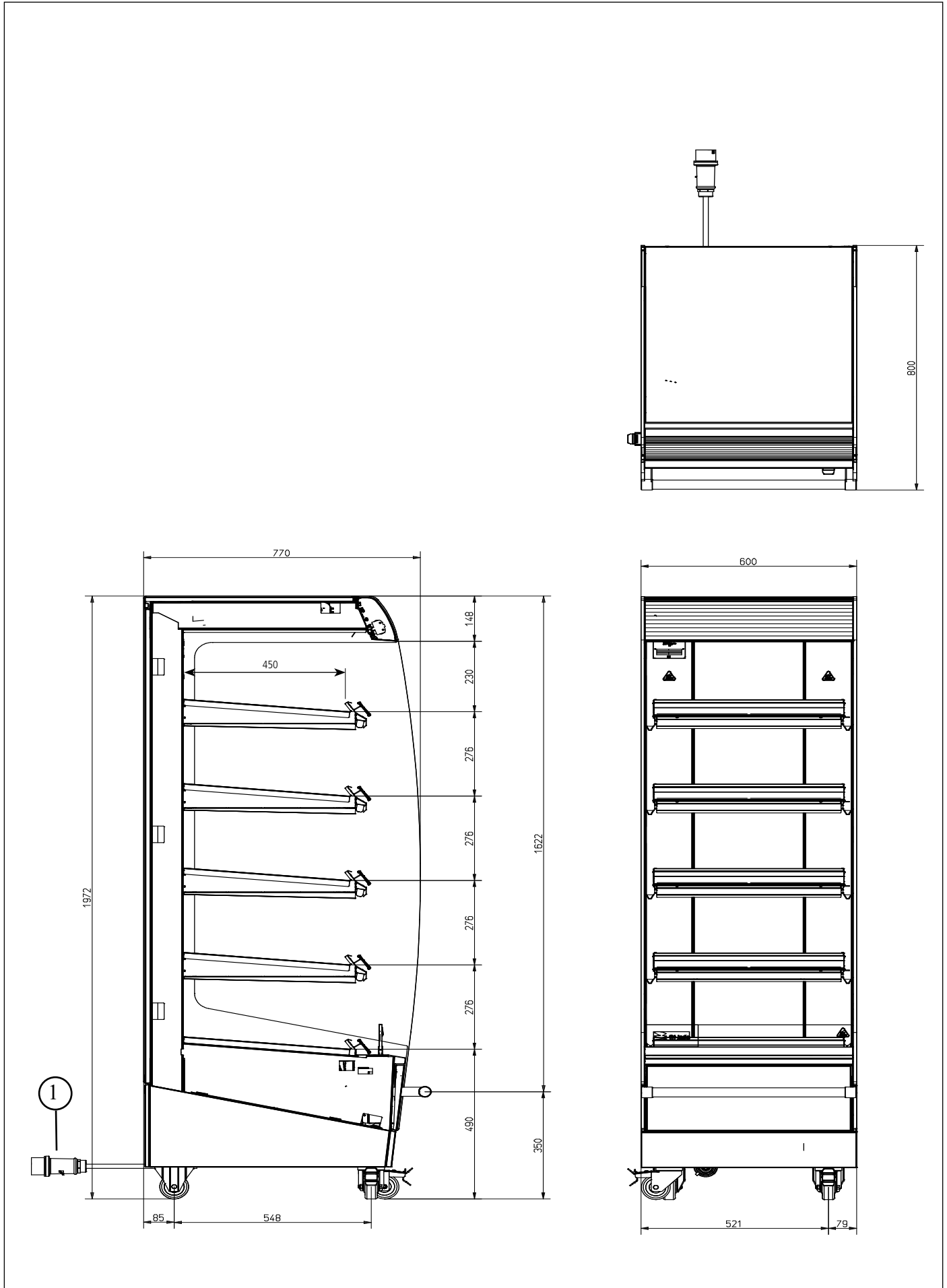


REVISION	REV. DATE	REMARK	Geom. Tolerance	Surface treatment	Geom. Tolerance
Tol. principle		Geom. Tolerance			
MATERIAL					
MATERIAL ART. NUMBER	DRAWN v. Dorst		APPROVED		
UNIT	SCALE 1: 20	STATUS In Progress	DATE 27. 11. 2009		
REMARKS	PROJECT 922		DRAWING NUMBER 9229340		
DESCRIPTION			ART. NUMBER 9229340	REV.	SIZE A4
MD-100-4 400V 5B					

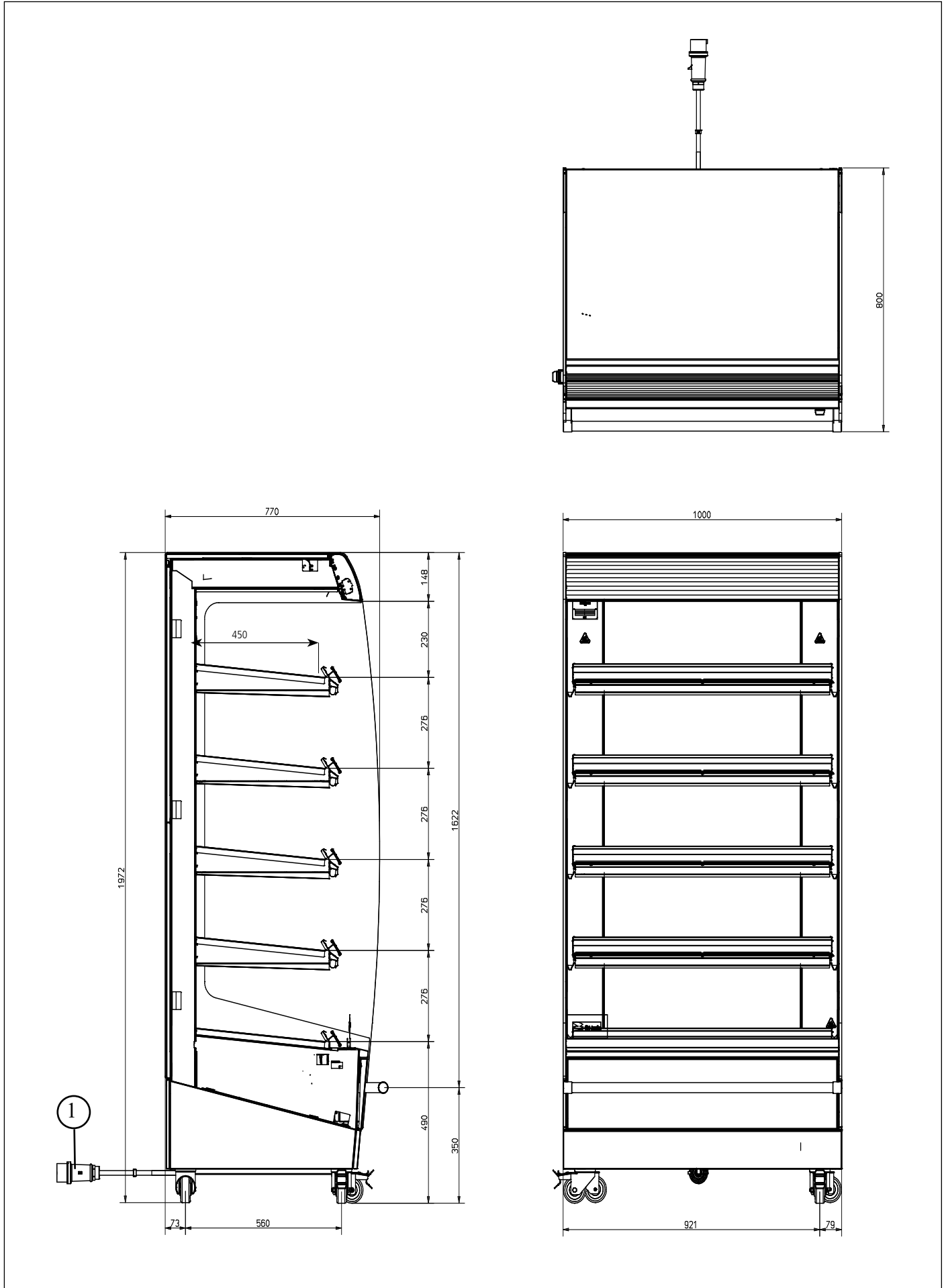
MULTI DECK 120 - 4 LEVEL



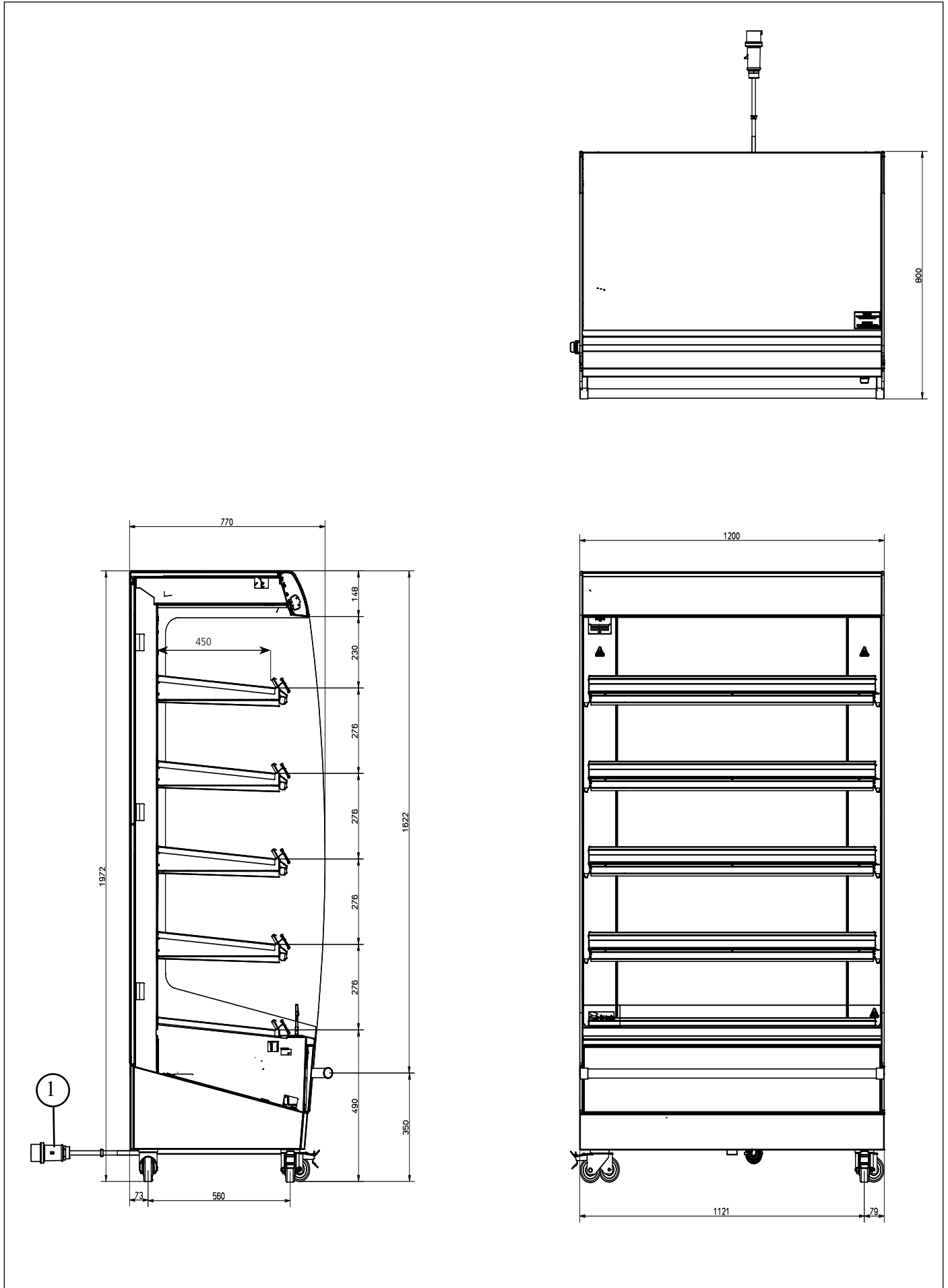
MULTI DECK 60 - 5 LEVEL



MULTI DECK 100 - 5 LEVEL



MULTI DECK 120 - 5 LEVEL



EMPTY PAGE

EMPTY PAGE

